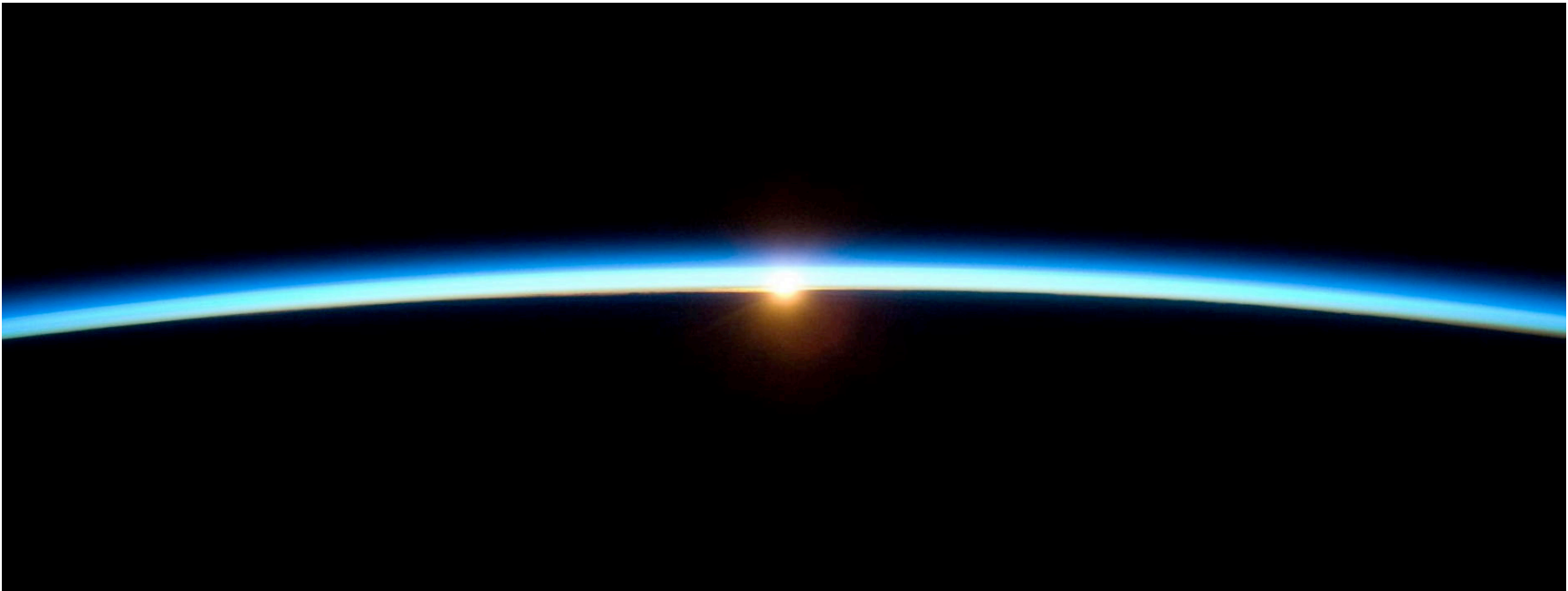


Spooky²

CancerTool – A Cancer Protocol Preset Builder



1 September 2019

By The Spooky² Team

Table of contents

CancerTool Introduction	3
The Full/System Scan	3
The Cancer Scan	4
The Targeted Cancer Preset	4
Installing CancerTool	5
Building your presets	6
Running the Cancer protocol	10
I've added a new scan but I don't see it	12
How can I tell when I last created the presets?	12
How are my frequencies chosen?	12
How do I create presets for multiple users?	12

CancerTool Introduction

The **CancerTool** automates the process of incorporating your full/system scans, your cancer scans, and your target cancer programs into the Cancer Protocol. Before you use the presets created by the **CancerTool**, run the Terrain protocol found in the *Presets* tab of Spooky² under *>Detox*, and documented in *GUIDE Terrain Protocol - Click Me.pdf*. The effectiveness of the Terrain protocol is enhanced if you also run the Contact, Plasma, Scalar, Laser, or Coil presets in addition to the Remote presets.

The Full/System Scan

The full/system scan finds various viruses, bacteria, parasites, and other pathogens in your body. Use the following biofeedback presets for the full system scan.

Biofeedback Hardware	Preset	Note / TENS pad placement
Spooky Pulse	\Biofeedback\Spooky Pulse\General\General Purpose Full System Scan - JW	Right wrist and left ankle.
GeneratorX	\Biofeedback\GeneratorX\GX General Biofeedback Scan (C) - JW	On the sides of the torso at the level of your intestines.
Scalar Digitizer	\Biofeedback\Scalar Digitizer\Spooky2 Scalar Digitizer Master (GX) - JW and \Biofeedback\Scalar Digitizer\Spooky2 Scalar Digitizer Slave (GX) - JW	
Sample Digitizer	\Biofeedback\Sample Digitizer\General Biofeedback Scan (SD) - JW	Effectiveness is limited by the pathogens available in fluid sample.

The Cancer Scan

The cancer scan finds frequencies specific to cancer. Use the following biofeedback presets for the cancer scan.

Biofeedback Hardware	Preset	Note / TENS pad placement
Spooky Pulse	\Biofeedback\Spooky Pulse\Cancer\zCancer Scana 1500000-1700000 (C)(R) - EV	Right wrist and left ankle.
GeneratorX	\Biofeedback\GeneratorX\GX General Biofeedback Scan (C) - JW	Cancer is between the TENS pads
Sample Digitizer	\Biofeedback\Sample Digitizer\General Biofeedback Scan (SD) - JW	Fluid sample must contain cancer cells.

The Targeted Cancer Preset

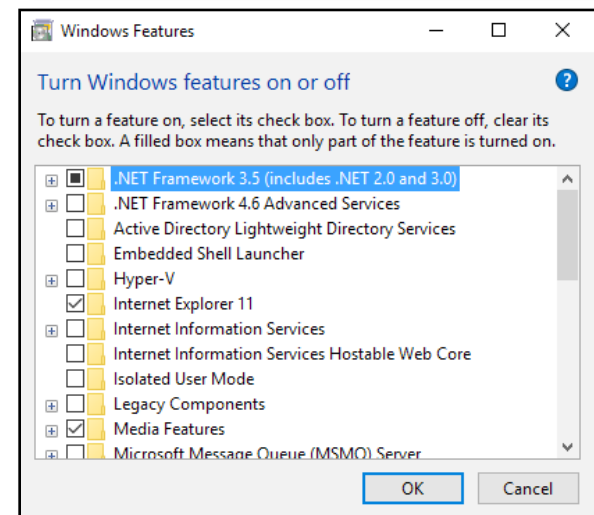
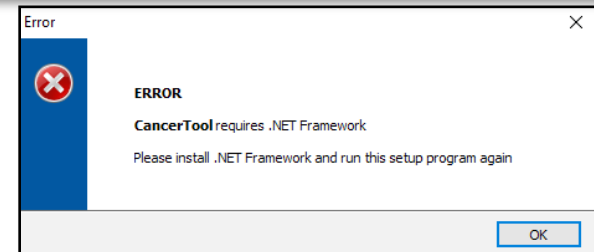
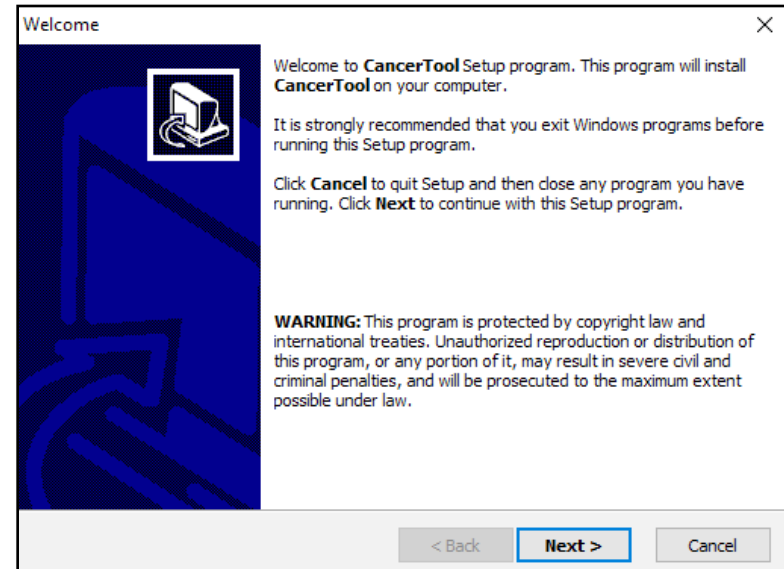
You must also create a preset that contains your targeted cancer programs. You can start with the shell preset *\Shell (Empty) Presets\Remote\Killing (R) - JW*, then add the cancer programs that target your specific cancer (i.e., breast cancer, prostate cancer, etc.). Save this preset into the *User* folder. Don't place the preset in a folder inside the *User* folder.

Installing CancerTool

The **CancerTool** comes in a zip archive, an example name of the archive is *CancerTool_Setup.1.0.400.exe.zip*. After downloading the zip file, extract the context of the zip archive, in this case a file called *CancerTool_Setup.exe*. Double-click *CancerTool_Setup.exe* in the Windows File Explorer/File manager, and you get the window to the right. Click the *Next >* button, and on each successive screen, click *Next >* again, until the you see the *Finish* button. Click the *Finish* button to finish the installation.

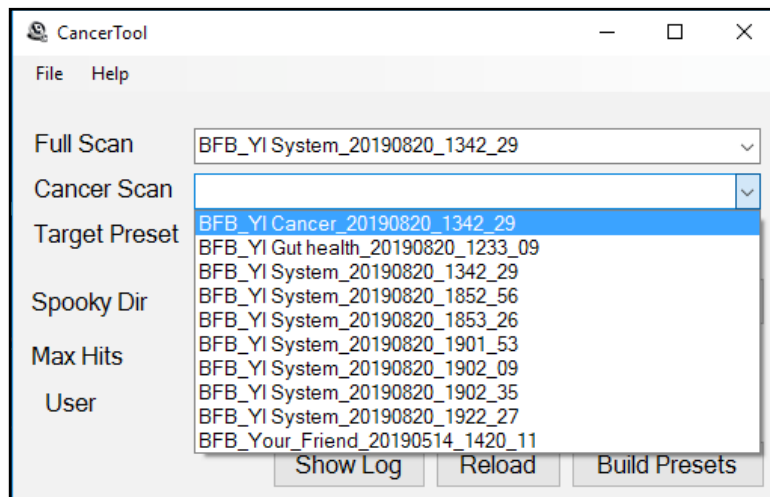
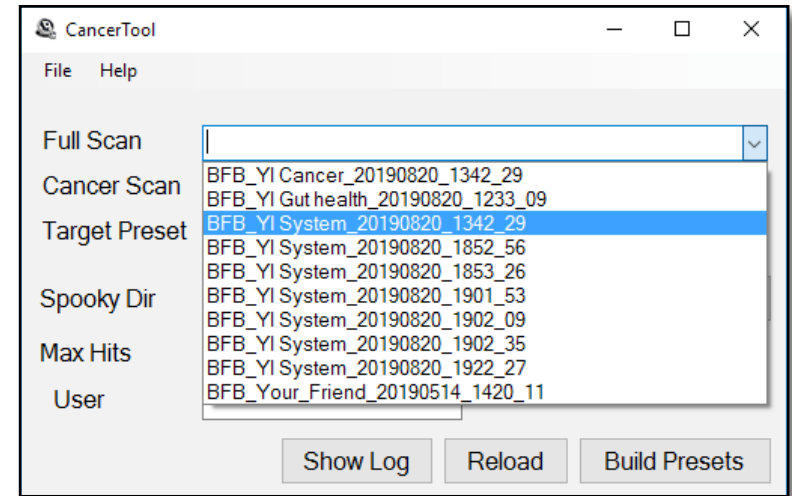
If you don't have the .NET framework installed, you may see the following error:

To remedy this, in your Control Panel find the *Turn Windows Features on or off* pane, click .NET 2.0 (in this case .NET 3.5 contains .NET 2.0), and click OK.



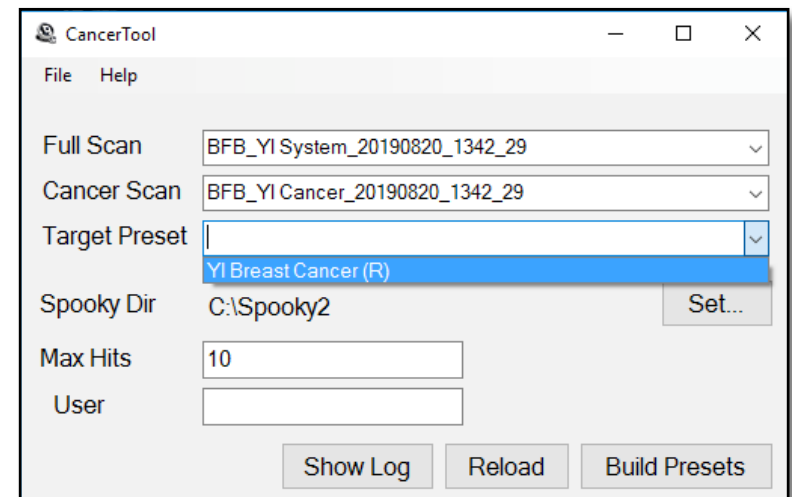
Building your presets

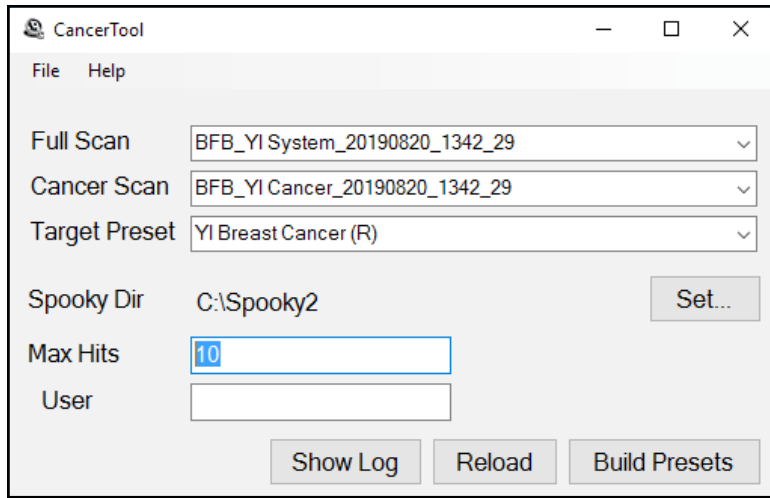
After you've finished your full/system and cancer scan in Spooky², bring up the **CancerTool**. Click on the down arrow on the combo box next to the *Full Scan* label, a menu will appear that has a list of the choices of biofeedback scan data files to choose (see the image to the right). Choose the newest full/system scan data file. If you don't see your recent scans in the menu, click the *Reload* button to load the current contents of the database into the utility.



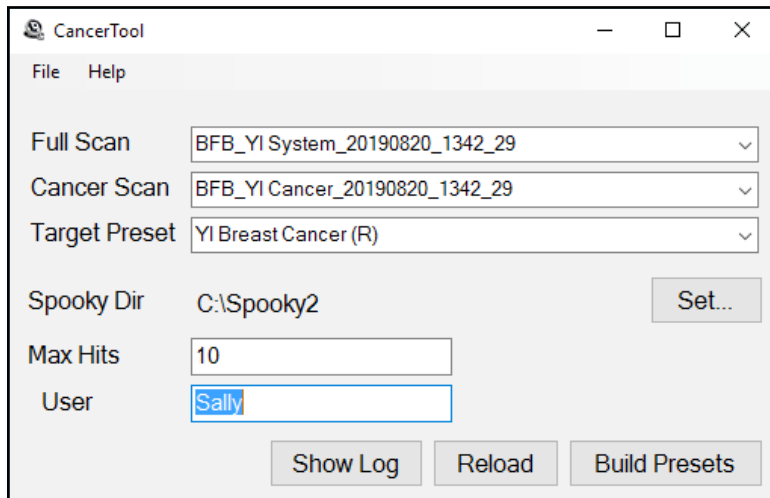
Next choose your cancer scan in the combo box next to the *Cancer Scan* label.

Now choose your targeted cancer preset in the combo box next to the *Target Preset* label. For more information, click [here](#).

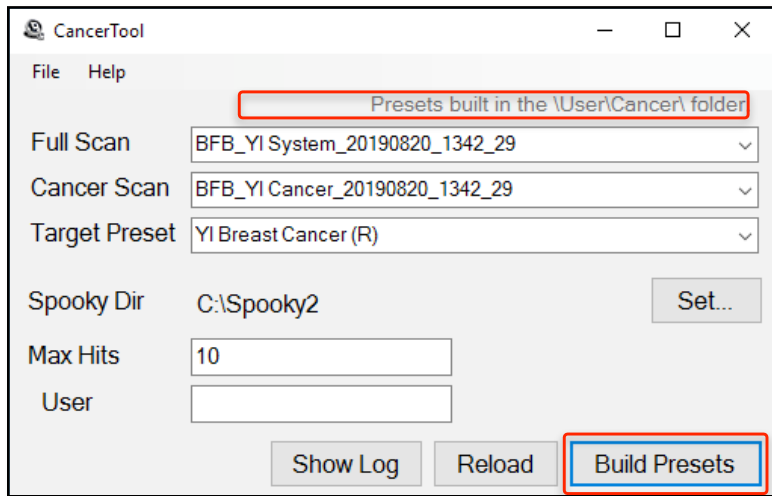




The *Max Hits* field is the number of the top frequencies to use. The default value is 10 hits.



The *User* field is an optional user name if you are treating more than just one person. When set, the *User* name is prepended to the presets that are generated by **CancerTool**,



Once all fields are set, click the *Build Preset* button to build your presets.

If the *Build Preset* operation is successful, you see a status message in the top right part of the window that says “*Presets built in the \User\Cancer\ folder.*”

Show Log

Click *Show Log* to see the frequency results of the last *Build Presets* operation. See a description of the Show Log results [here](#).

Reload

Click *Reload* to refresh the entries in the *Full Scan*, *Cancer Scan*, and *Target Preset* list. See a description of this button [here](#).

Build Presets

Build Presets creates the presets for this protocol. This is described earlier [here](#).

Set...

Click the *Set...* button to change the *Spooky Dir* location. Most people will not need to use this command, as the default value is the default *Spooky Dir*. But if you install your Spooky² software into a different directory, use this button.

Running the Cancer protocol

Now that you've built your first presets, you can now run them. The generated presets are found in `\User\Cancer\` in the *Presets* tab, the remaining presets are in `\Cancer\DB\`. If you have 2 generators, you run the following:

Step	Scan and Build Presets	Days	Generator 1	Generator 2
1	Yes	4	ALL Detox (R) - DB*	C06 Cancer A - DB <i>or</i> P06 Cancer A - DB <i>or</i> S06 Cancer A - DB <i>or</i> M06 Cancer A - DB <i>or</i> L06 Cancer A - DB <i>and when finished, run</i> R06 Cancer A - DB
2	Yes	4		C07 Cancer B - DB <i>or</i> P07 Cancer B - DB <i>or</i> S07 Cancer B - DB <i>or</i> M07 Cancer B - DB <i>or</i> L07 Cancer B - DB <i>and when finished, run</i> R07 Cancer B - DB
3	Yes	4		C08 Cancer C - DB <i>or</i> P08 Cancer C - DB <i>or</i> S08 Cancer C - DB <i>or</i> M08 Cancer C - DB <i>or</i> L08 Cancer C - DB <i>and when finished, run</i> R08 Cancer C - DB
4	No	2		Overnight Contact Sweep (C) - DB** <i>or</i> P09 Cancer Sweep (P) - JW*** <i>and when finished, run</i> Spectrum Cancer Sweep (R) - DB*

* found in `\Cancer\DB\Remote`

** found in `\Cancer\DB>Contact`

*** found in `\Cancer\DB\Plasma`

If you have 3 generators, here is the schedule.

Step	Scan and Build Presets	Days	Generator 1	Generator 2	Generator 3
1	Yes	4	ALL Detox (R) - DB*	R06 Cancer A - DB	C06 Cancer A - DB <i>or</i> P06 Cancer A - DB <i>or</i> S06 Cancer A - DB <i>or</i> M06 Cancer A - DB <i>or</i> L06 Cancer A - DB
2	Yes	4		R07 Cancer B - DB	C07 Cancer B - DB <i>or</i> P07 Cancer B - DB <i>or</i> S07 Cancer B - DB <i>or</i> M07 Cancer B - DB <i>or</i> L07 Cancer B - DB
3	Yes	4		R08 Cancer C - DB	C08 Cancer C - DB <i>or</i> P08 Cancer C - DB <i>or</i> S08 Cancer C - DB <i>or</i> M08 Cancer C - DB <i>or</i> L08 Cancer C - DB
4	No	2		Spectrum Cancer Sweep (R) - DB*	Overnight Contact Sweep (C) - DB** <i>or</i> P09 Cancer Sweep (P) - JW***

* found in \Cancer\DB\Remote

** found in \Cancer\DB>Contact

*** found in \Cancer\DB\Plasma

Note: Before running Step 1,2 or 3, you must do a full system scan and a cancer scan first, and then build presets to run for the next 4 days.

I've added a new scan but I don't see it

If you've done a recent system scan, but don't see your new scan data file in the combo box, click the *Reload* button to read in the ScanData directory again.

How can I tell when I last created the presets?

If you load the generated presets in `\User\Cancer\`, the *Preset Notes* will contain the create date.

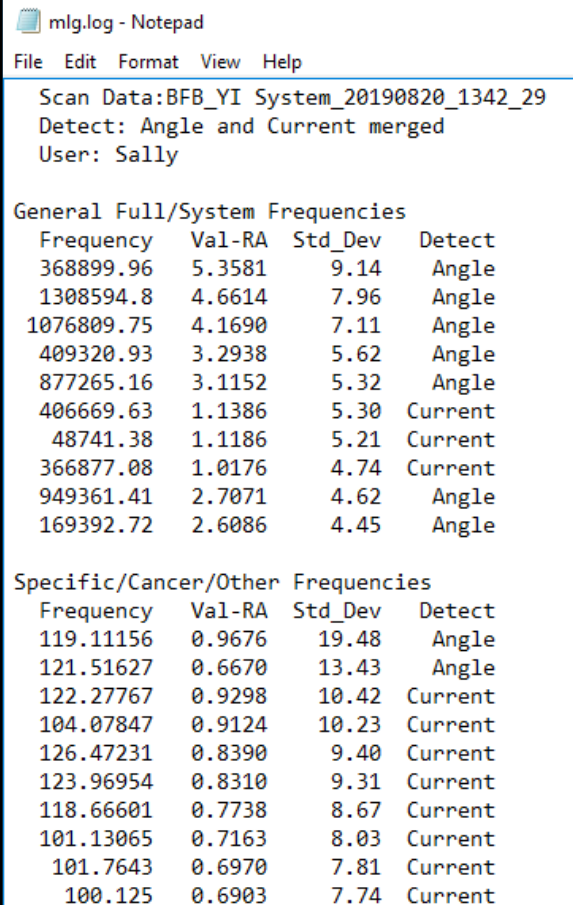
How are my frequencies chosen?

The **CancerTool** runs an analysis of the Current and Angle data for GeneratorX scan results, and the BPM and HRV data for the Spooky Pulse scan results. The best results are chosen from these two analyses using the ratio of the measured *Value - RunningAverage* divided by the standard deviation for that data. This calculated ratio makes it possible to determine the relative strength of data from two different sources (i.e., Current/Angle or BPM/HRV).

When you click the *Show Log* button, the *Notepad* window that appears first has the analysis for Angle, then the analysis for Current, then the merged Angle and Current results (for GeneratorX).

How do I create presets for multiple users?

By default all presets that are created start with the text *R0*, *C0*, *P0*, *S0*, *M0*, and *L0*. If you are creating presets for different users, you don't want the 2nd person's presets overwriting the 1st person's presets. To avoid this, type each person's name into the *User* field before clicking *Build Preset*. If you type *Joseph* into the *User* field and click *Build Presets*, the new preset will all start with *Joseph R0* or *Joseph C0*, etc.



The screenshot shows a Notepad window titled 'mlg.log - Notepad'. The menu bar includes 'File', 'Edit', 'Format', 'View', and 'Help'. The text content is as follows:

```
Scan Data:BFB_YI System_20190820_1342_29
Detect: Angle and Current merged
User: Sally
```

General Full/System Frequencies

Frequency	Val-RA	Std_Dev	Detect
368899.96	5.3581	9.14	Angle
1308594.8	4.6614	7.96	Angle
1076809.75	4.1690	7.11	Angle
409320.93	3.2938	5.62	Angle
877265.16	3.1152	5.32	Angle
406669.63	1.1386	5.30	Current
48741.38	1.1186	5.21	Current
366877.08	1.0176	4.74	Current
949361.41	2.7071	4.62	Angle
169392.72	2.6086	4.45	Angle

Specific/Cancer/Other Frequencies

Frequency	Val-RA	Std_Dev	Detect
119.11156	0.9676	19.48	Angle
121.51627	0.6670	13.43	Angle
122.27767	0.9298	10.42	Current
104.07847	0.9124	10.23	Current
126.47231	0.8390	9.40	Current
123.96954	0.8310	9.31	Current
118.66601	0.7738	8.67	Current
101.13065	0.7163	8.03	Current
101.7643	0.6970	7.81	Current
100.125	0.6903	7.74	Current