



Spooky² Quick Guide

Spooky2 Team
February 2018

<https://www.spooky2.com>

TABLE OF CONTENTS



Welcome	01
Precautions	01
Important Advice	01
Spooky2 Overview	02
Hardware	03
• Spooky2 Discrete Accessories	03
Software	05
• Simple Installation Guide	05
• Windows Warnings	06
• Possible Windows Install Errors	07
• Software Interface	07
Treatment	08
• Remote Mode	09
• Contact Mode	13
• Cold Laser	18
• PEMF Coil	21
• TENS Internal Electrode	23
• Spooky Central/Spooky Plasma	25
• Spooky Pulse	28
• Colloidal Silver	32
• GeneratorX	36
Tips	61
• Treatment Choices	61
• Protocols	62
Legal Notice & Disclaimer	62
Spooky2 Software License	63

Welcome...

Welcome to the Spooky2 Quick User's Guide. This Guide allows you to quickly and easily start using Spooky2 to kill pathogens and heal organs and systems. Now take control.

Precautions

To use the Spooky2 Rife System safely you must:

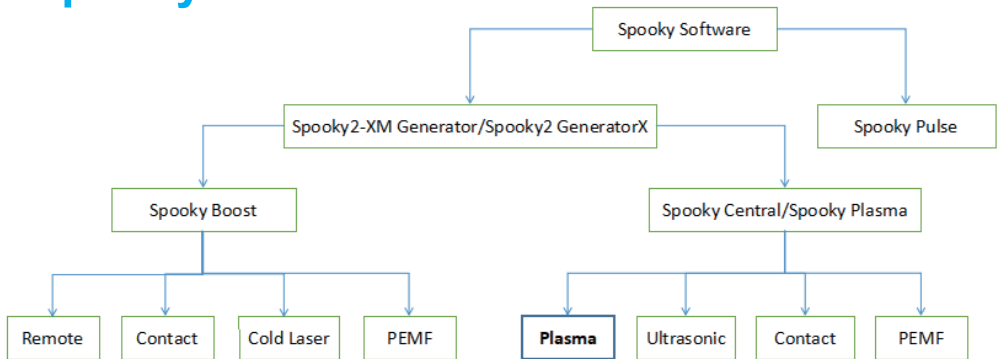
1. Never unplug it while in use. Always stop it in the software, and then switch off the generator.
2. Do not adjust the generator front panel controls. The Spooky2 Rife System is designed to be totally controlled by the software.
3. If you suffer with heart problems or wear a pacemaker or other electrical implant, please use Spooky2 Remote Mode ONLY.
4. If you suffer from impaired liver or kidney functions, please exercise caution when using Spooky2.
5. Frequency generation systems should **NEVER** be used while pregnant since official testing has not been performed.

Important Advice

1. Run Terrain Protocol once before anything else – particularly important for Spooky Central users. This protocol is also built into the Cancer Protocol and Morgellons & Lyme protocol.
2. Note that the Morgellons & Lyme Protocol is a very efficient wide spectrum antibiotic/parasiticide.
3. Drink plenty of pure water to help conductivity and toxin elimination.
4. When you kill organisms, make sure you detox. Otherwise, a Herxheimer reaction – nausea, joint/lower back pain, fatigue, etc - may ensue.

If so, run the following programs: Lyme Herxheimer Helper 1 (XTRA), Lyme Herxheimer Helper 2 (XTRA), Detox Toxins Elimination 1 (XTRA), Detox Toxins Elimination 2 (XTRA), Lymph Drain Circulation (XTRA).

Spooky2 Overview



Note: Spooky Plasma has plasma mode only for ease of use.

Spooky2 is the most highly advanced and versatile Rife machine in the world. The brain of this system is the Spooky2 software, freely downloadable from www.spooky2.com. We recommend downloading the Spooky2 Starter Pack. This contains the latest software and User's Guide. And it runs on a Windows PC - even a cheap netbook. Windows 7, Windows 8, Windows 8.1, or Windows 10 is required.

Full Package:

Spooky2 Starter Pack

♥ Contains the latest Spooky2 software installer, the Spooky2 User's Guide, the Spooky2 Quick Guide, ChainEditor 2.1, and the Spooky2 Resources Directory (all separately linked below).

The heart of this system is the Spooky2 generator. It is a frequency generator. This little generator unlocks the incredible power of Spooky2.

There are five main transmission methods in Spooky2: Remote, Contact, PEMF, Cold Laser, and the powerful Plasma. You can connect the first four directly to Spooky2-XM generator or through Spooky Boost, but Plasma can only be driven by Spooky Central.

Spooky Pulse is an infrared biofeedback system. It helps find frequencies in the body that correspond to viruses, bacteria, and parasites.

Hardware

Please check your products according to the packing list. And the following pictures will help you recognize the products.

Spooky2 Discrete Accessories



1. Spooky2–XM Generator



2. Spooky Boost v3.1



3. Spooky Remote v2.0



4. Spooky Conductive
Carbonized Rubber
Hand Cylinders



5. Spooky Tens Pad



6. Spooky Tens
Contact Kit



7. Spooky Tens
Internal Electrode



8. Spooky Cold Laser
Twin



9. Spooky Cold Laser
Wrist



10. Spooky PEMF
Coil



11. Spooky Phanotron
Plasma Tube



12. Spooky Straight
Plasma Tube



13. Spooky Ultrasonic



14. Spooky Pulse
Earclip Option



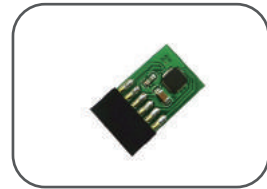
15. Spooky Pulse
Fingerclip Option



16. Spooky Pulse
Finger Clip



17. Spooky Pulse
Ear Clip



18. Spooky2-XM
Generator Spare
Communication
Board



19. Spooky 10
Port USB 3.0 Hub



20. Spooky Quad
5V Power Supply



21. Spooky2
Silver Rods



22. Magnetic Stirrer



23. TENS Cable



24. Spooky USB
Filter Cable



25. Spooky2 BNC
Filter Cable



26. BNC Cable



27. BNC Female
Connector



28. Spooky2 USB
Memory Stick



29. Spooky2
GeneratorX

Software

Simple Installation Guide

1. Download the software:

Go to www.spooky2.com/downloadspage/ and click on the Spooky2 Starter Pack to download it.

2. Install the software:

A. Go to either your Download, Quick Access or Recent Folder and extract all files from the downloaded Spooky2 Starter Pack zip file.

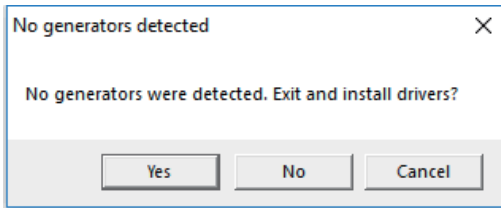
B. In the new window that opens up, go into the Spooky2_Starter_Pack folder.

C. Go into the Spooky setup folder. Then double click on the Spooky setup application and follow the screen prompts.

D. When the installation is done, tick “Yes, launch the program file,” then click the “Finish” button.

E. Spooky2 will launch. You will see a “No generators detected” alert.

F. Click “Yes” to install drivers, and the driver installer will launch. Please-follow the screen prompts.



When the driver installation for the Spooky2-XM generator completes, click Finish. Now you have Spooky2 software successfully installed.

Windows Warnings

There are two very important settings in Windows that you need to be aware of when using Spooky2:

1. PC Sleep Settings:

When your PC sleeps or hibernates, Spooky2 will simply suspend, which will cause Spooky to lose control over the generators. The generators will freeze and will become locked transmitting the same frequency. It will not be good for your health.

To fix this, go to Control Panels > Power Options > Change when the computer sleeps, and set everything except the screen to Never. Alternatively, you can use a dark screen saver to extend display life (Control Panels > Personalization > Screen Saver).

2. Windows Update Reboots:

If your PC is also used for the internet, Windows can download and install updates automatically. It can then quit Spooky2, install the updates, and restart your PC – ending your entire Spooky2 session without any warning to you.

To fix this, go to Control Panels > Windows Update > Change settings and choose anything other than Install updates automatically. If you don't want to lose this auto-install functionality, you can simply switch off your modem/wi-fi router or unplug your ethernet cable before going to sleep or leaving your home. Please note on Windows 10 you may not have the option of turning off updates.

Possible Windows Install Errors

1. Runtime Error xxxx: Invalid Port Number:

This is a Windows error and normally indicates that the PC is confused about exactly what's connected to its USB ports. It's usually resolved by restarting the PC.

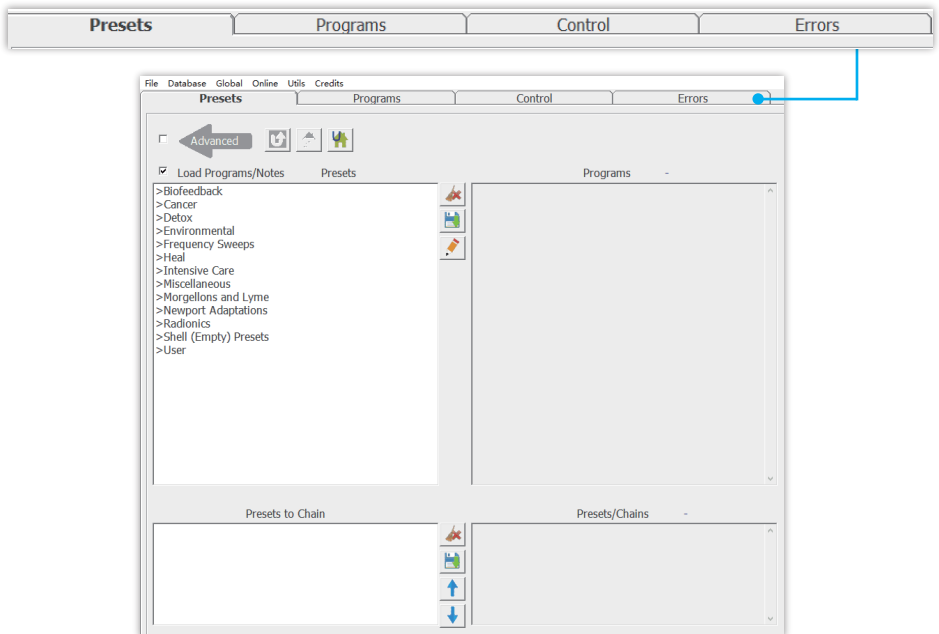
2. Remedies for Driver Problems:

Sometimes, an incorrectly configured PC or other software already installed can interfere with driver installation calls. You can fix this by installing drivers manually. Here's how:

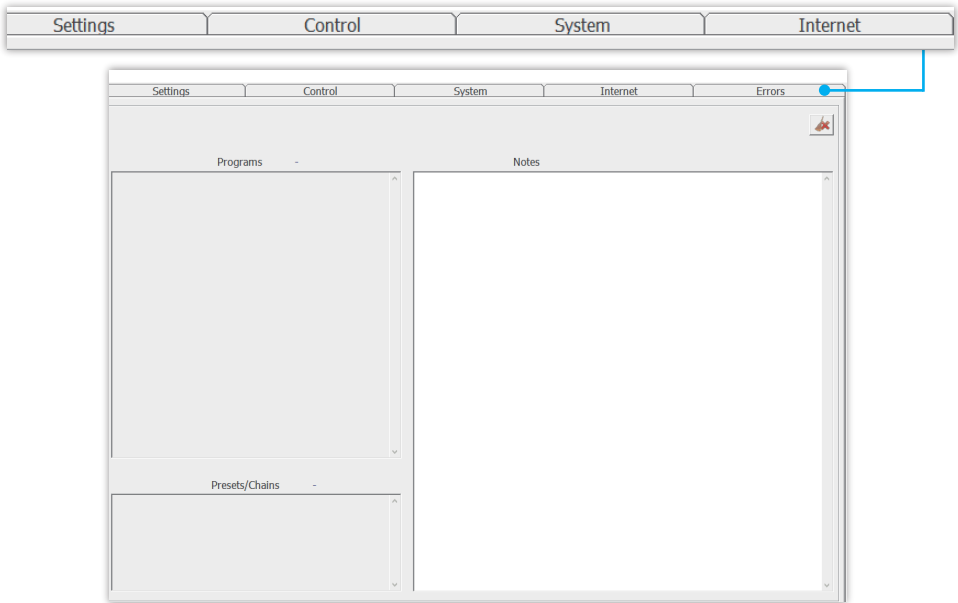
Click the Utils menu on the menu bar and choose Install Spooky2–XM Drivers command to install the driver. When the installation process is done, quit everything and restart your PC. Then turn on Spooky2 XM generator and launch Spooky2 software. The generator should be detected.

Software Interface

Now we'll take a quick look at the interface of Spooky2 software. The first screen you will see is the Presets tab in Simple View:



Simple View has four tabs – Presets, Programs, Control, and Errors. Tick the box by the Advanced arrow (top left) to see:



Advanced View displays an additional three tabs – Settings, System, and Internet. The main body of the Presets window remains unchanged.

You're now ready to begin setting up your Spooky2 Rife System.

Treatment

To start a treatment, there are three simple steps:

1. Connect Spooky2 accessories.
2. Turn on the generator before launching the software so that the generator will be detected.
3. Launch Spooky2 software and choose presets and/or programs to run.

There are two types of presets:

1. Factory preset.
2. Shell preset.

Factory presets include software settings and programs. How to run a factory preset will be shown below in the remote mode example. And how to run a shell preset will be shown below in the contact mode example.

Tips

1. To make the generator detected by the software, it's necessary to turn on the generators before launching the software.
2. In the preset tab, (R) stands for Presets for Remote Mode; (C) stands for Presets for Contact Mode; (P) stands for Presets for Plasma Mode.

Connecting Devices:

First, hook up the generators to your PC:
Connect the power plugs into your generators. Now connect your generators to your PC with the USB cables and turn them on now. Next connect the transmission device of your choice to the generators.



Remote Mode

Step 1

First, connect Spooky boost to the generator then connect Spooky Remote v2.0 to the BN port of Spooky boost v3.1.



Step 2

Put your DNA into Spooky Remote v2.0. It is recommended to use fingernails as DNA sample.

Here's how to package your nail clippings using paper stickers (included in the package):

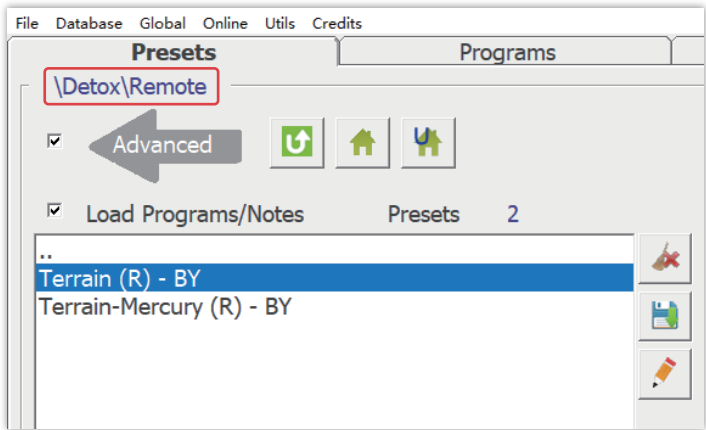
1. Put your fingernail on the sticker. Then use another sticker to cover it.
2. Write a name on the sticker.
3. Open the remote to put in your fingernail.
4. Close the remote.



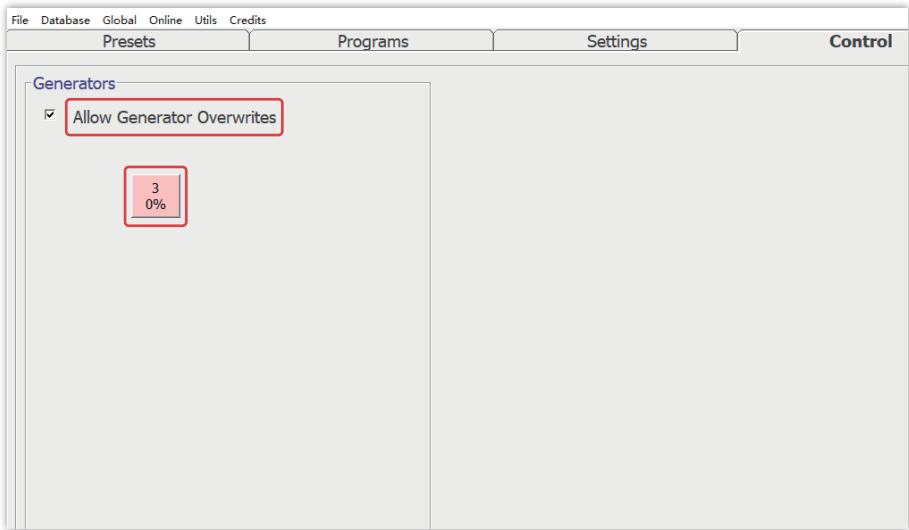
Step 3

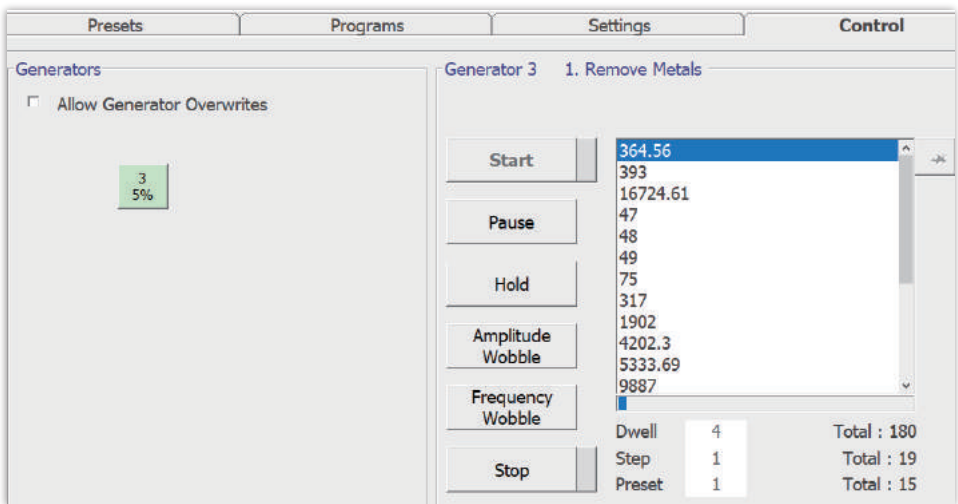
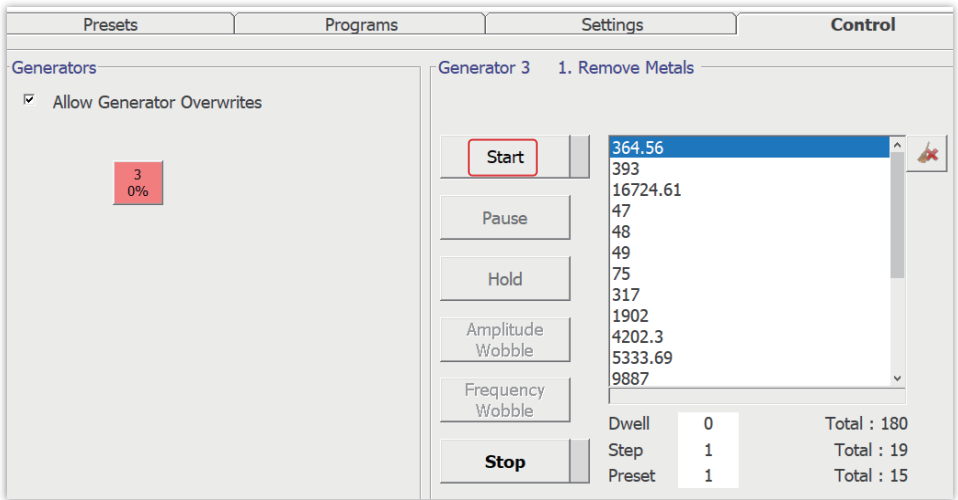
Turn on generator and launch Spooky2 software. Here will show you how to run a factory preset.

How to run a Factory Preset which includes the programs and settings:
First select >Detox, and then the >Remote sub-collection. Next, select Terrain (R) - BY, which is a factory preset.



Go to Control Tab, tick Allow Generator Overwrites, open a generator button. After the frequencies are loaded, you can click Start button to start the treatment. Then, you will see both of the LEDs on Spooky Remote light up.





Note:

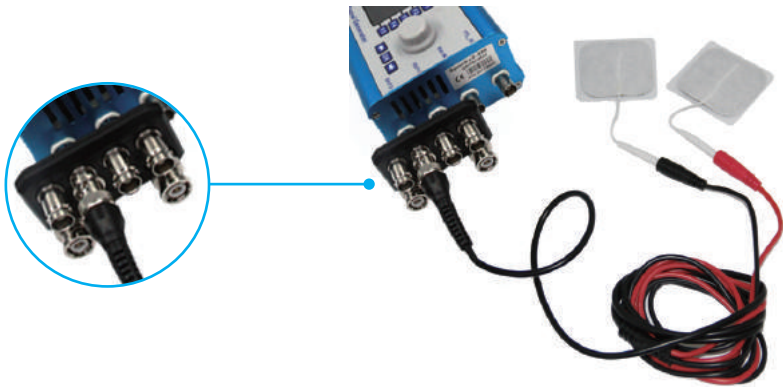
1. Any remote preset can run on the Remote v2.0.
2. Although multiple people can be treated in the same remote simultaneously, their nails should be separated by the paper stickers.

Contact Mode

Step 1

We have many different kinds of contact accessories, including Spooky Conductive Carbonized Rubber Hand Cylinders, Tens pads, Tens Contact kit, Tens Internal Electrode, etc. Here we will take Tens pads as an example.

First, connect Spooky boost to the generator. Then connect a pair of TENS pads to the High-Power port of Spooky boost.



The connection of other contact accessories is the same.

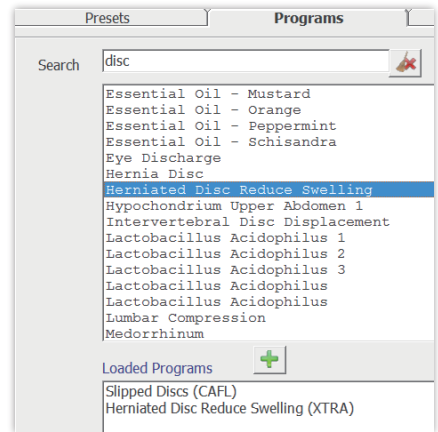
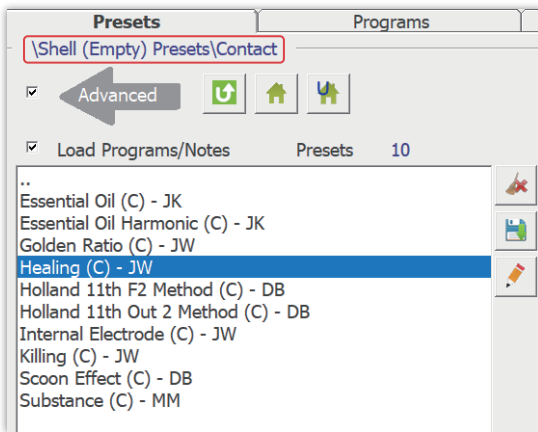


Step 2

Turn on generator and launch Spooky2 software.

You can run factory presets using contact the same way as shown in Remote mode, but here we will show you how to run a “Shell Preset”, where you need to choose your own programs.

For example, I'd like to treat my herniated disc:

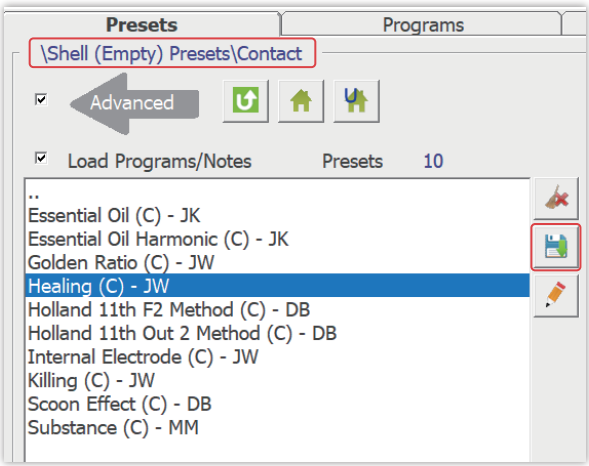


First select >Shell (Empty) Presets, and then the >Contact sub-collection. Next, select Healing (C) – JW.

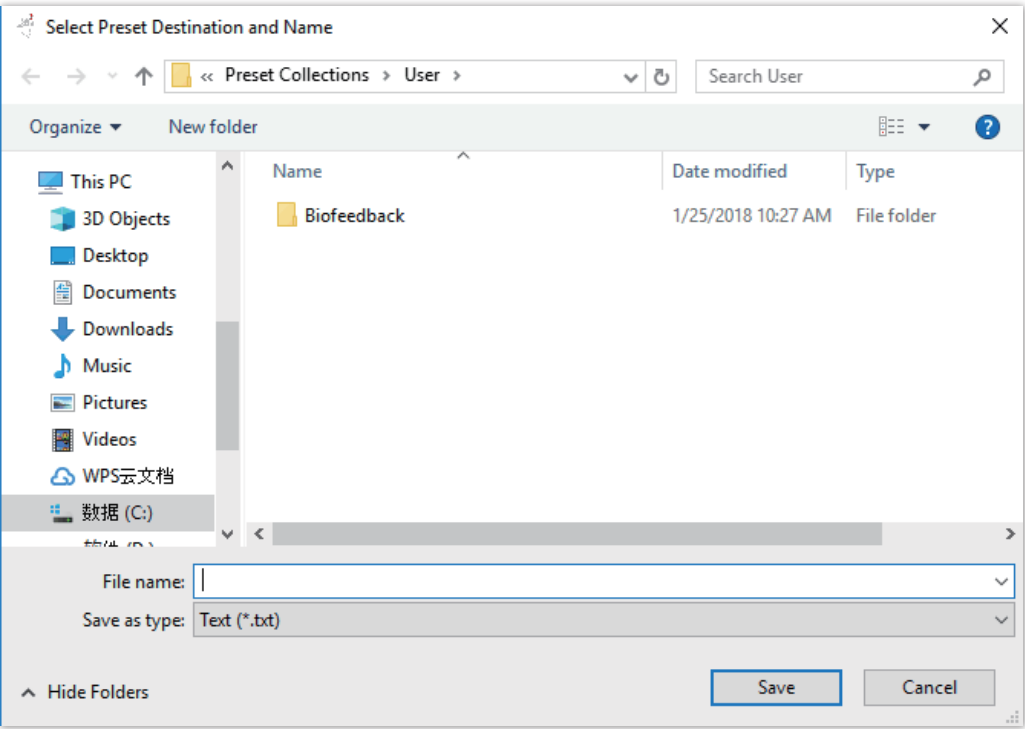
Now you must search for and load the programs you need. So click the Programs tab. Type “disc” into the Search field and get 258 results. Double click Slipped Discs CAFL, followed by Herniated Disc Reduce Swelling XTRA.

You will see that both programs are now present in the Loaded Programs column above.

Now it's time to save your work, so return to Presets and click the Save button.



Spooky2 takes you to the User folder – which is where your User preset collection is stored.

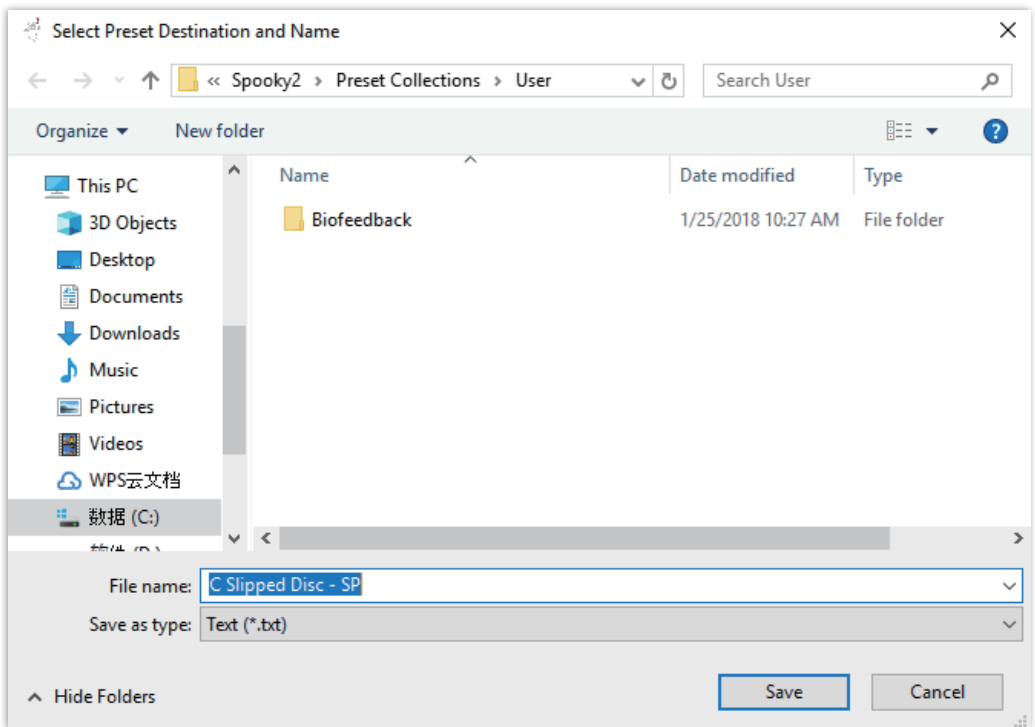


Since this is your first contact preset, the folder is empty:

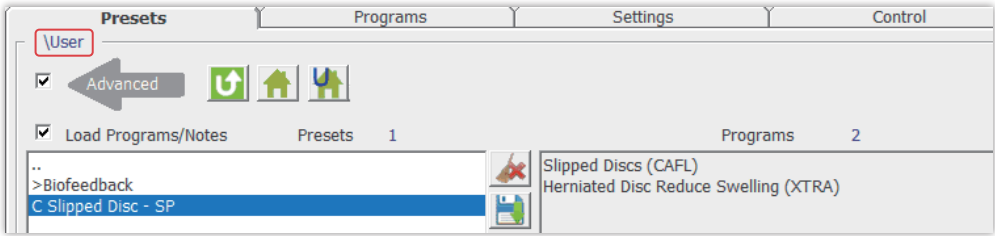
In the File Name field, type:

C Slipped Disc – SP

The “C” is to remind you that this is a Contact Mode preset. The SP is the User's initials.

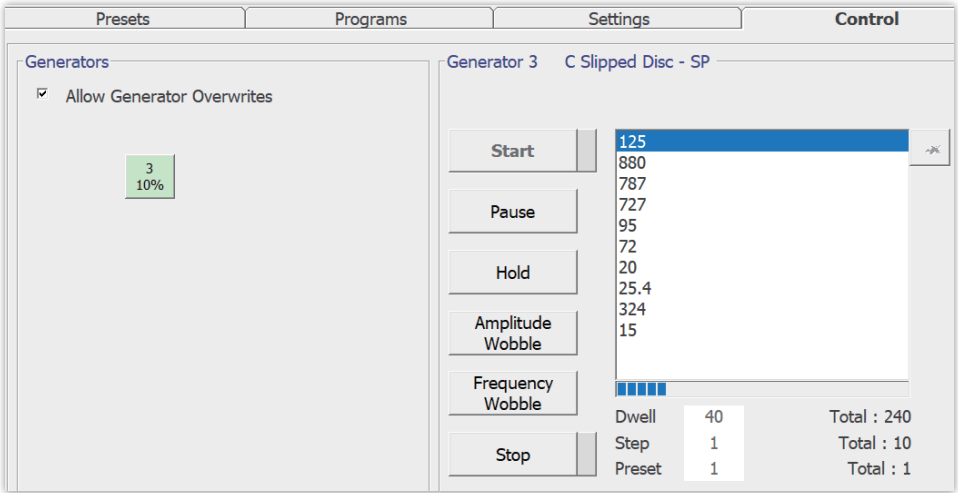
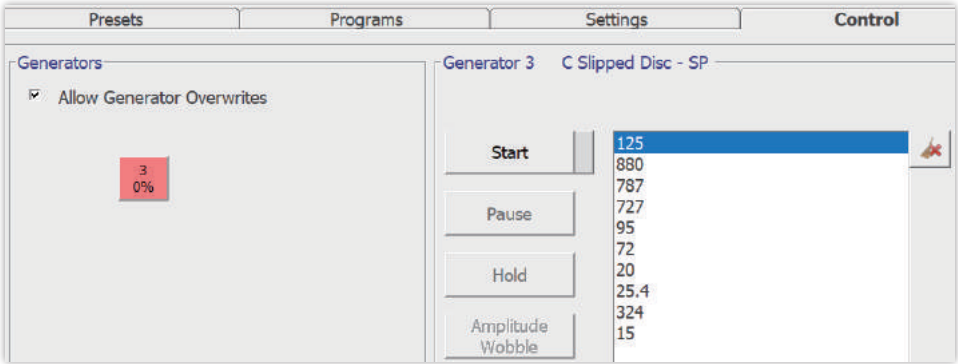


Click the User button in the Presets tab, then you see this:



Your new preset is waiting for you, so select it to load it.

Then go to the Control tab. First tick the Allow Generator Overwrites checkbox, then the generator button you wish to use. You can now click Start to get some relief.



Note:

1. Do not use 100% offset for contact mode.
2. Do not put TENS pads above the neck and keep them away from the heart.
3. Do not use contact mode if you have pacemaker or electrode implants.
4. Do not use more than one contact accessory on your body at a time.
5. You can use any contact presets for contact accessories in the software. Tens Internal Electrode has its own preset.
6. The procedure of running all the contact accessories is the same in the software. If the voltage is too high for you, you could use the Boost's Colloidal Silver output instead.
7. The connection of all the contact accessories is the same.

Cold Laser**Step 1**

Connect Spooky Cold Laser Twin or Wrist to the Out 1 of Spooky2-XM generator. Do not use a Boosted output from Spooky Boost. You can also use the OUT1 of your Spooky boost.



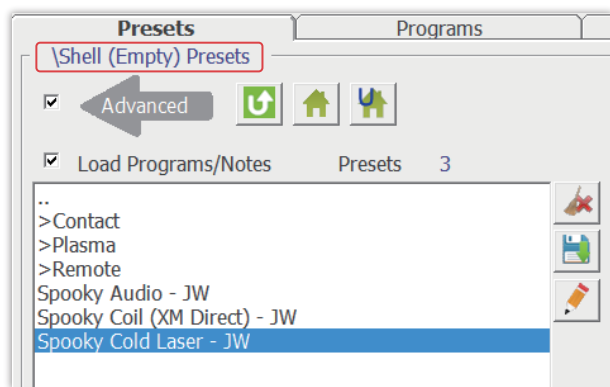
Step 2

Turn on the generator and launch Spooky2 software.

There are two kinds of Spooky Cold Laser Presets:

Spooky Cold Laser - JW

Acne (Spooky Cold Laser) - JW



Spooky Cold Laser - JW is a shell preset, which needs the user to add the programs they wish to run.

Acne (Spooky Cold Laser) - JW is a factory preset, which has been designed to treat Vulgaris Acne. The same preset can be used for other conditions because it stimulates the body's natural immune system.

Step 3

Laser Placement

Spooky Cold Laser Twin can be inserted directly into your nostrils, ear, navel, or acupuncture points (meridians). Placing the lasers further from the target can treat larger areas.

Laser covers are provided for Spooky Cold Laser Twin. Clean them with warm, soapy water, rinse, and dry between use.



Spooky Cold Laser Wrist is primarily designed to be strapped onto the underside of your wrist. This treats your carpal tunnel and the blood passing through the radial artery. It is also ideal to treat larger skin areas if long treatment times are desired.



Spooky2



For larger area treatment, you can use the strap with cold laser wrist:



Note:

1. Never shine the light of lasers directly into your eyes.
2. Do not allow children to play with Spooky Cold Laser.
3. Do not use Spooky Cold Laser in wet areas.
4. Do not use any other device to control Spooky Cold Laser.
5. Do not use Cold Lasers over any cancerous spots or your thyroid.

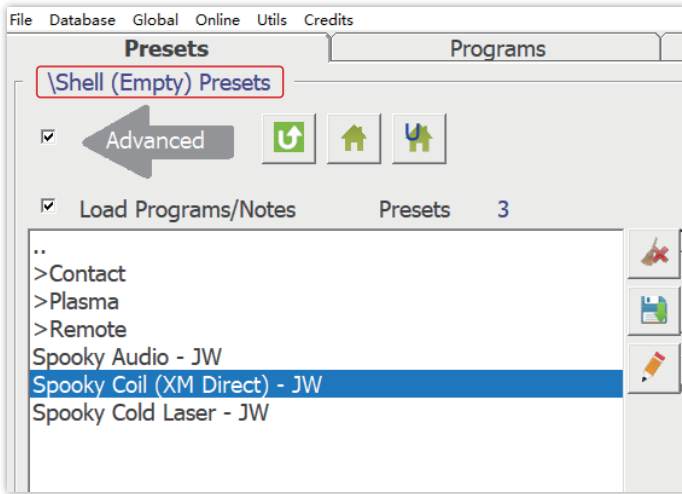
PEMF Coil

Step 1

First, connect Spooky boost to the generator, and then connect the PEMF coil to the High Power Port of Spooky boost.

Step 2

Turn on Spooky2-XM generator and launch Spooky software.
The preset for PEMF coil is called Spooky Coil (XM Direct) - JW



Step 3

Use the BN side to touch the skin. The coil can be used for entrainment.



Note:

Do not use a PEMF coil in the following situations:

During pregnancy

Non-MRI-Safe IUD

People or Animals with Organ Transplants

People or Animals with Pacemakers, Hearing Aids, Medical Pumps, or other Electrical Implants/Devices

Non-magnetic metal rods, screws, and plates are safe for PEMF use.

If an implant is safe for an MRI, it is safe to use PEMF coil.

TENS Internal Electrode

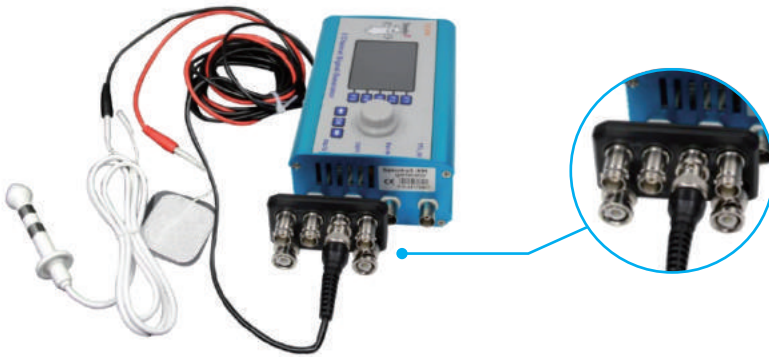
Step 1

First, connect a Spooky boost to the generator, then connect the TENS cable to the Colloidal Silver port of Spooky Boost. Connect each black and red pin of the TENS cable to the Tens Internal Electrode. The treatment area will be between the electrodes as shown in below picture.



Alternatively, you may connect one TENS cable wire to one of the Internal Electrode wires, and the other TENS cable wire to a regular TENS pad. The treatment area will be the straight line between the electrodes as

shown in below picture. The distance between electrodes is much greater using this method, allowing the prostate gland and bladder area to be treated.



We recommend you initially use the safe, low-power Colloidal Silver port of Spooky Boost. If you want more power, you can use the 'High Power' port of Spooky Boost.

Step 2

Internal Electrode Insertion:

We recommend liberal use of gel or water. Insertion is easier, and the electrical connection is improved. Keep the gel away from the cables. Carefully and slowly insert the internal electrode into the anal canal or vagina.

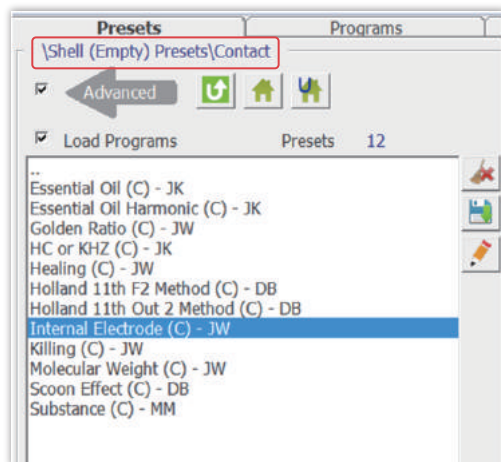
Place the (optional) secondary TENS pad on your chosen location.

Plug the TENS electrical cable firmly into the electrodes.

Choose a comfortable position. It is best not to move during treatment, as this may dislodge the electrode.

Step 3

Turn on Spooky2-XM generator and launch Spooky2 software. Load the Internal Electrode (C) - JW preset in Spooky. This is a “Shell Preset” containing no frequencies. Select the program(s) best suited to your condition to run.



Note:

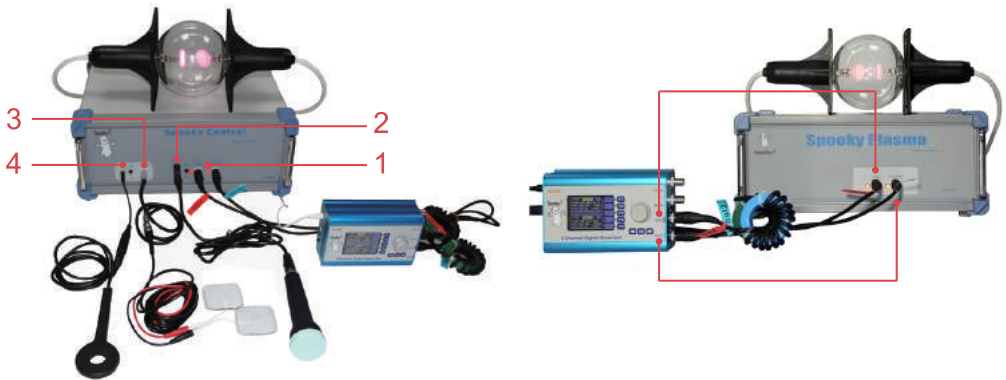
1. Do NOT immerse the electrode in water.
2. Do NOT use if you are pregnant.
3. Do NOT use if you are wearing, or have implanted, any electronic medical devices.
4. Stop immediately if you feel any discomfort.
5. Always clean the TENS internal electrode before and after each use. You can clean with an antibacterial wipe or with warm soapy water. Rinse and dry the electrode thoroughly. Be careful to keep the wires dry.

Spooky Central/Spooky Plasma

Step 1

Making Connections:

1. Connect your generator to Central. Out 1 goes to Input, and Out 2 connects to Modulation.
2. Connect your ultrasonic transmitter to the short adaptor plug, then insert this into the Ultrasonic socket.
3. Connect your Hand Cylinders or TENS pads to the short adaptor cable, then connect it to Contact.
4. Connect your PEMF coil to Coil.



5. Connect your plasma tube to the rear high voltage sockets.
6. Connect your mains electrical cable to the socket on the rear of the machine.



7. Use the USB filter cable to connect your PC to the Spooky2-XM generator that's connected to Spooky Central.

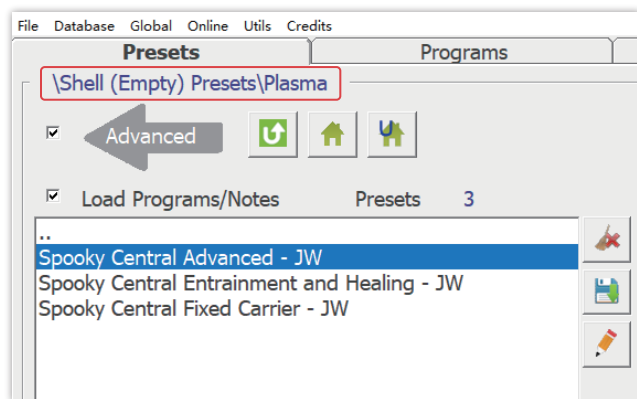
After connection, now switch on Spooky Central. The power light will illuminate orange.

For Spooky Plasma, please follow connection steps 1, 5, 6 & 7. The software setup is the same as Spooky Central.

Step 2

Software Settings

Launch Spooky2, select "Spooky Central Advanced - JW" from the Preset Menu, load the programs you wish to use, then run your Program. You can also use other Plasma presets for Spooky Central.



Note:

1. Never disconnect anything while Spooky Central is powered on – always switch it off first, then disconnect.
2. Accessories should be left unplugged if you do not plan to use during a session.
3. Spooky Central only accepts a 5volt / 100% offset square wave input. Any other voltage/amplitude or waveform may cause damage.

Any other voltage/amplitude or waveform may cause damage.

4. A Spectrum sweep can be used, but you must set it to use a square wave, with 5 as the value for Amplitude, and a 100% positive value entered in both Offset fields.

5. Input Duty Cycle (from Out 1) must be 50%. Modulation (Out 2) may have any Duty Cycle value.

6. To avoid the above programming errors, always use a Plasma shell setting or Plasma Preset for Spooky Central.

7. Please take caution if you have metal implants in your body.

Spooky Pulse

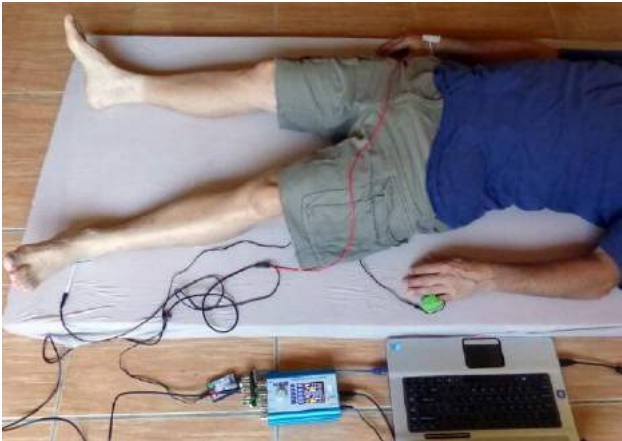
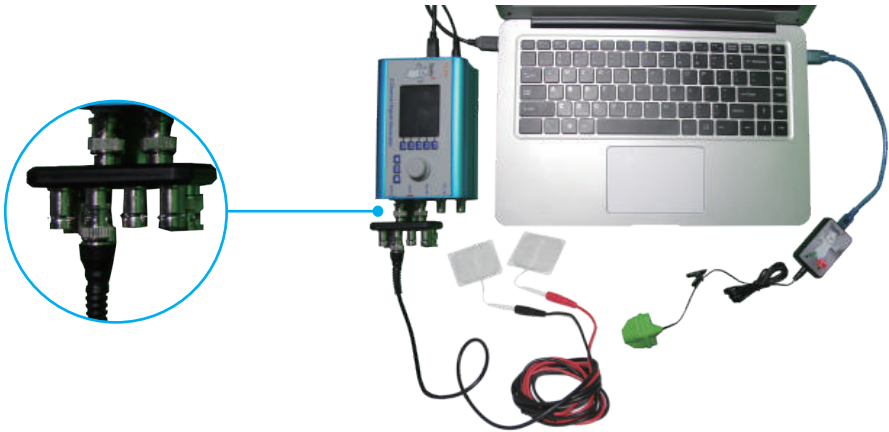
Step 1

Scanning measures your heart rate's reaction to frequencies. Please follow these suggestions:

1. Lie down flat on a comfortable bed.
2. Ensure that you're well hydrated.
3. Remain completely relaxed throughout the scan. Avoid movement. You can go to sleep or you can use peaceful, relaxing music instead.
4. You may use Remote or Contact Modes to input the frequencies. For Contact Mode, TENS pads are best, one on the back of the right hand, the other just below the outside ankle of your left foot. For Remote Mode, use a Remote and a fresh DNA specimen.
5. Wear Ear clip on your left ear and wear finger clip on the middle finger of the left hand to get stronger senses.
6. Because digestion uses very large amounts of energy, it's best to start a scan two hours after your last meal.
7. Turn off your cell phone and remove it from the room.
8. Make arrangements not to be disturbed.
9. Pause or stop all other generator(s) from running during a scan.

Step 2

To start, connect Spooky Pulse via USB to the PC. Now launch Spooky2 software.



First, ensure that the Enable System Sounds option is ticked in the System tab. That way, Spooky2 will alert you via audio if something needs your attention.

☒ **Enable system sounds**

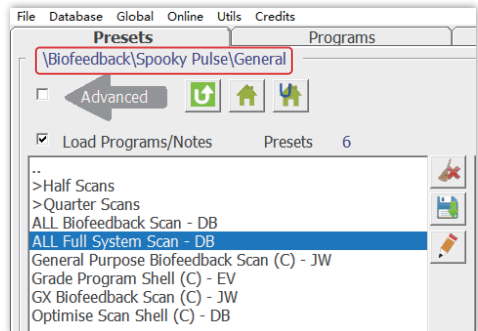
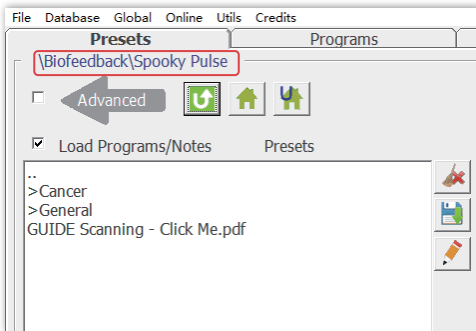
General Settings

- ☐ Display Port Number
- ☐ High CPU Priority (Normal)
- ☐ Write program log
- ☒ Enable system sounds
- ☒ Show Internet Tab

Step 3

Scanning

Dr. Rife and Dr. Clark found that most pathogenic organisms resonate at a frequency between 76,000Hz and 880,000Hz. This is the range – or bandwidth – scanned by the ALL Full System Scan – DB preset. To load this, go to Presets and select Biofeedback:



Now select >Spooky Pulse >General to see the result shown on the right.

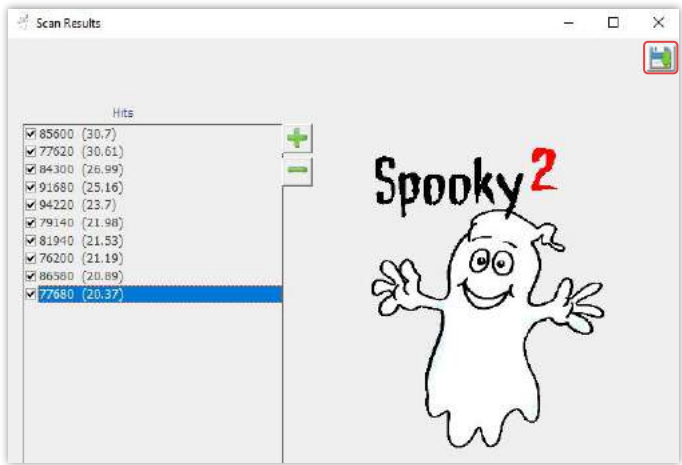
Select the highlighted preset.

Now go to Control, tick Allow Generator Overwrites, then click the scan generator. The Frequency Column should now be empty, and you should see these settings:

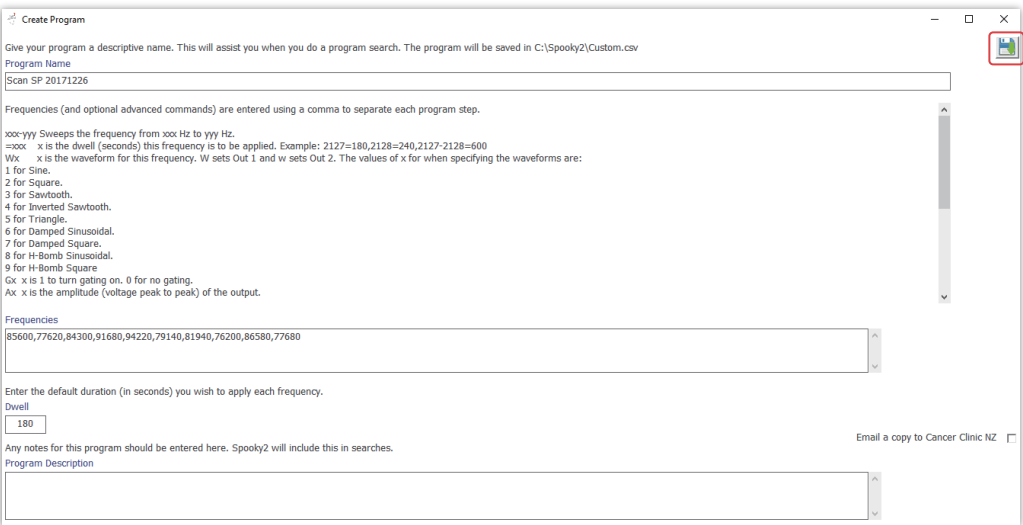
Biofeedback Scan		Detect		Calculate Using	
Log Name		<input checked="" type="radio"/> Max	<input type="radio"/> Min	<input type="checkbox"/> Change	<input checked="" type="radio"/> Running Average
Start Frequency	76000 Hz	<input checked="" type="radio"/> BPM	<input type="radio"/> Angle		<input type="radio"/> Peak
Finish Frequency	152000 Hz	<input type="radio"/> HRV	<input type="radio"/> Current		<input checked="" type="checkbox"/> 2 DP Max
Initial Step Size	20 Hz		<input type="radio"/> Angle + Current		<input checked="" type="checkbox"/> Single Scan
	.025				<input type="checkbox"/> Grade Program
Decimal Places	0	BPM	0	Av. BPM	0
Max Hits to Find	20	HRV	0	Av. HRV	0
Samples/Step	1	VI Angle	0	Av. Angle	0
Start Delay	30	Current	0	Av. Current	0
Threshold	.4				
Estimated Biofeedback Duration		00:44:56		<input type="button" value="Scan"/> <input type="button" value="Analyse"/>	

Click Scan Button to start biofeedback scan.

When your scan completes, you will see the results presented in a new window. You must save these by clicking the Save and Exit button.



This will take you to the Create Program window. Name your scan results set appropriately, then save it.



Spooky2 will automatically refresh the database loaded into memory. Your new program can now be searched in the Programs tab.

Note that this all-pathogen scan doesn't just find organisms – it also kills them. So remember that every scan you do is also a powerful treatment in itself.

For this reason, we recommend that scans be done in Contact Mode using TENS pads. However, it's also possible to use Remote Mode if necessary, but remember that a single remote sweep will not be as powerful a treatment as one done in Contact Mode.

You cannot use plasma to input a scan sweep because the plasma energy will freeze Spooky Pulse. However, you can use plasma to run your scan results, using the correct shell preset (Spooky Central Advanced - JW).

Note:

1. If your scan is interrupted in some way, you will have to start it again. Scans cannot be paused once they've started. If All Full System scan takes too long for you, you can choose to run Quarter Scan instead.
2. If the sensor has been dislodged and fallen off, you need to repeat the scan from the beginning.

Colloidal Silver

Follow these simple steps to create true colloidal silver with a high silver content. The silver particle size will be very small. This increases effectiveness.

Step 1: Preparation

Spooky2-XM Generator x1 (including power adapter, USB cable)
BNC / Alligator cable x1
Spooky Boost x1
Spooky Silver Rod x2
Glass or Ceramic Container x1
Distilled Water Only
Magnetic Stirrer x1.



Step 2: Washing

Thoroughly clean the Spooky silver rods and container. Rinse with distilled water and dry with a napkin.

Step 3: Connection

1. Fill a glass or ceramic container with distilled water. Do not use tap or filtered water. These will almost certainly contain unwanted impurities and chemicals.

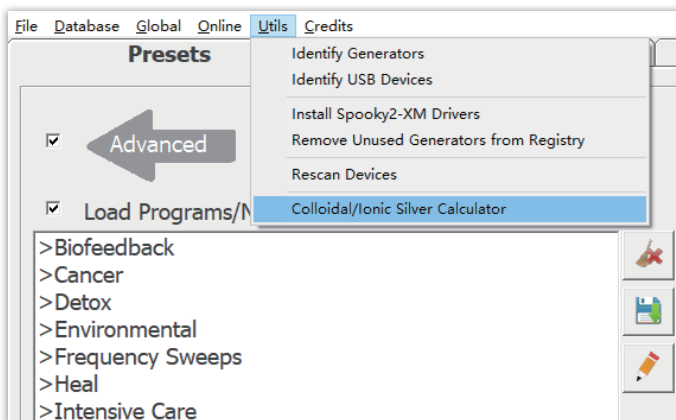
2. Place two clean and shiny silver rods in the water. They must be more than one inch apart.

3. Making Connection. Connect Spooky boost to the generator, then connect the BNC / Alligator cable to the Colloidal Silver port of Spooky boost. Use alligators to clamp the silver rods.




Step 4: Settings

Turn on Spooky2-XM generator. Launch Spooky2 and use the calculator to estimate the Dwell you need to enter for the Colloidal Silver Generation program. Click Utils, Colloidal/Ionic Silver Calculator.



Colloidal / Ionic Silver Calculator



Colloidal/Ionic Silver Calculator

Colloidal/Ionic Silver is easy to make. Making truly great nano-particle silver takes more effort. Spooky can help. Enter values in the boxes to find the optimum setting.

By Calculation

Volume (ml)

500

PPM

20

Current (mA)

.2

Duration (mins)

750

Duration (hours)

12.5

Duration (days)

.5

By Measurement

Initial TDS

0

Final TDS

10

PPM

20

Enter your numbers in the top two to find the Dwell Multiplier you need to enter in the Program Options pane.

The total time needed to make your CS will be shown beside Duration (mins), which needs to be remembered. For example, I enter 500ml and 20PPM. The duration is 750 mins.

If you don't have a multimeter to measure the current, simply make the supposition that your system will consume 0.2 mA.


Go to Preset tab, load the Colloidal Silver Generation - JW Preset. Enter the estimated dwell into the Dwell Multiplier field and go to Control tab to start the preset.


Presets


Programs

Miscellaneous

☒ Advanced







☒ Load Programs/Notes

Presets 3

>Coil

>Contact


>Plasma


>Remote


Acne (Spooky Cold Laser) - JW

Colloidal Silver Generation - JW

Signal Test (R) - DB







Options

Repeat Each Frequency	1	<input type="checkbox"/> Remove Duplicate Frequencies
Repeat Each Program	1	<input type="checkbox"/> Apply Tissue Factor to MW and BP Programs
Repeat Sequence	1	
Repeat Chain	1	
Dwell Multiplier	750	
Frequency Multiplier	1	
Do NOT sort frequencies		

The waveform has been designed to produce very small silver particles of varying size. Do not rush the manufacturing process. Slower is better.



GeneratorX

GeneratorX (GX) is a new entry in the Rife community. It is the world's most powerful Rife generator, brimming with features. Each GX contains 2 function generators, each with 2 outputs and full biofeedback function. GX can produce 40 MHz with any waveform, and can also load up to 30 programs from Spooky to run standalone without a computer. How amazing is that!

User Controls



Outputs



Part 1 Using GX With Your Computer

Making Connections

Connect the 12V power adaptor into GX.
Connect the USB cable to GX and your computer.



Connect your signal-transmitting device directly to GX, or through Spooky Boost.

GX contains 2 function generators. Both fully independent to the other. So you can run two transmitting devices simultaneously.

In this example, G1 connects to a pair of Spooky TENS pads and G2 connects to Spooky Remote.

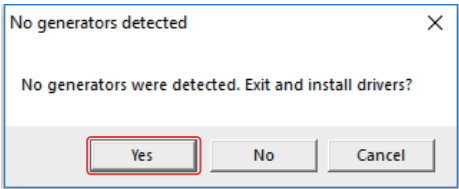


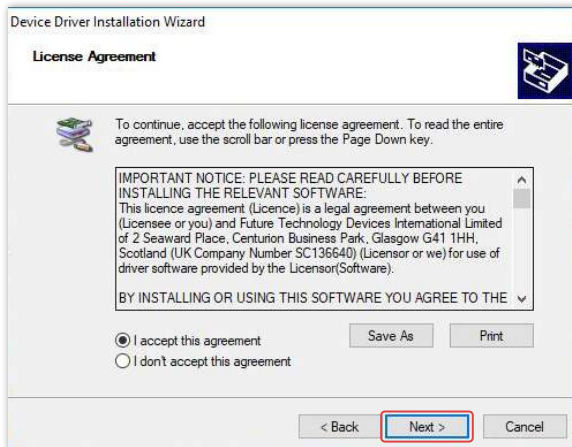
Short press the Power button to turn on GX.



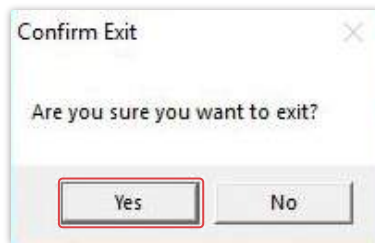
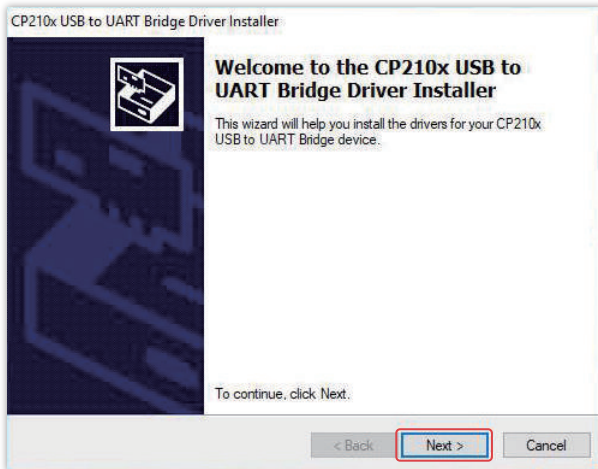
Software Operation

1. Launch the Spooky2 software. If this is the first time you have connect-
ed GX, you will be prompted to install drivers:





You can skip the XM driver installation:

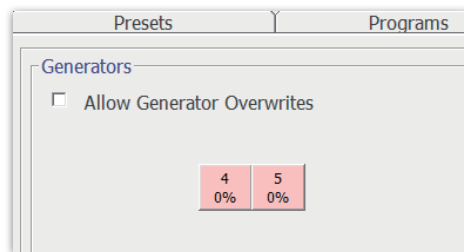


After Confirming Exit, restart Spooky. All your generators will now be recognized.

GX is 2 generators in one, so each GX uses 2 ports. It is easy to identify the port numbers used by each generator. The port number is displayed on the screen. In this example, Generator 1 is using port 4 and Generator 2 is using port 5.

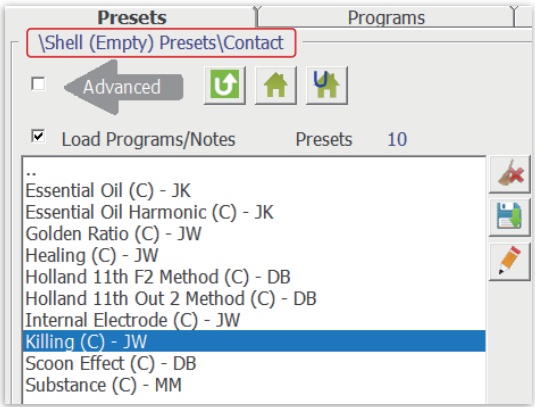


The software will show the port numbers in the Control tab:



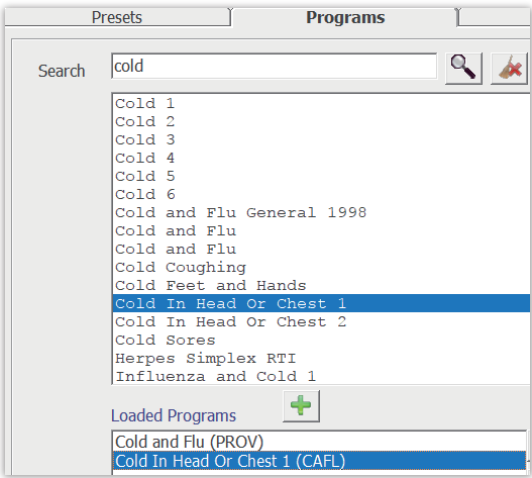
Now you can choose presets for your generators. In our example, Generator 1 is using port 4 and connects to a pair of Spooky TENS pads. Generator 2 is using port 5 and connects to Spooky Remote. So we choose a contact preset for port 4 (Generator 1) and a remote preset for port 5 (Generator 2).

For example, to treat a cold, you can use Generator 1 to run cold programs and Generator 2 to run detox programs. To do this, first go to Presets tab, select >Shell (Empty) Presets, and then the >Contact sub-collection. Next, select Killing (C) – JW.

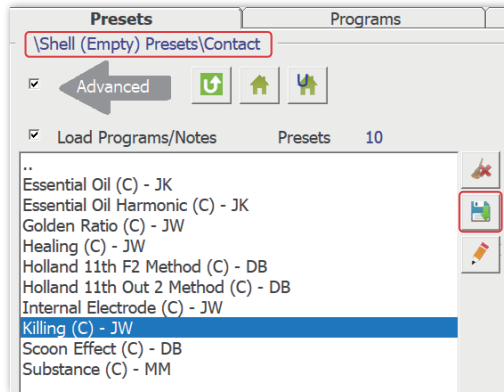


Now you can search for and load the programs you wish to run. Select the Programs tab and type “cold” into the Search field. You will get about 42 results. Double click Cold and Flu (PROV), followed by Cold In Head Or Chest 1 (CAFL).

You will see that both programs are now present in the Loaded Programs column below.



Now it's time to save your work, so return to Presets and click the Save button.



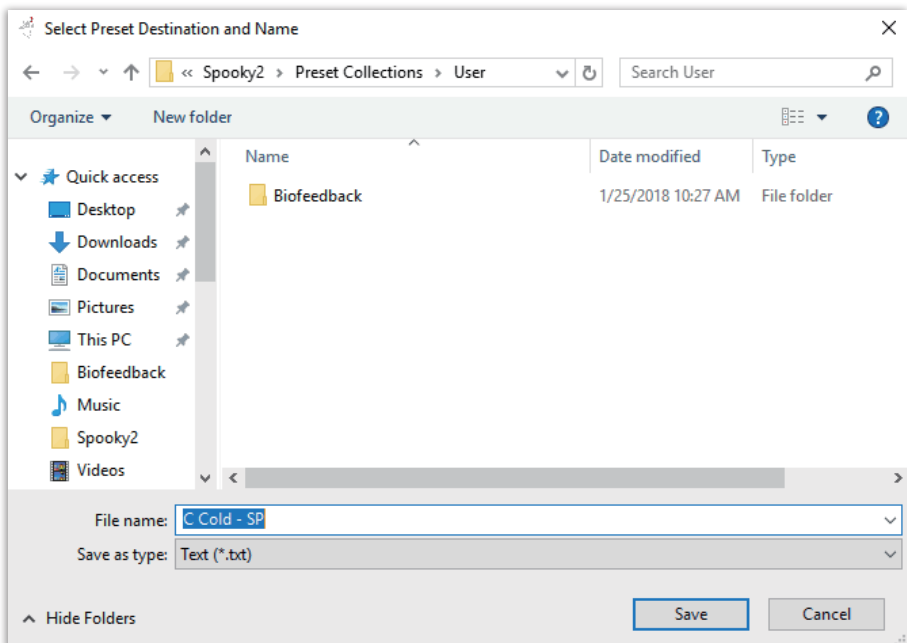
Spooky2 takes you to the User folder – which is where your personal presets are stored.

Since this is your first contact preset, the folder will be empty.

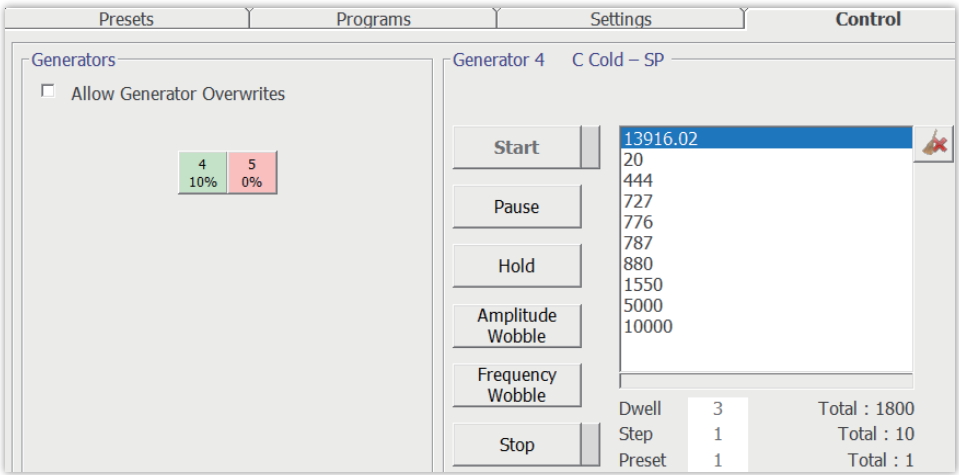
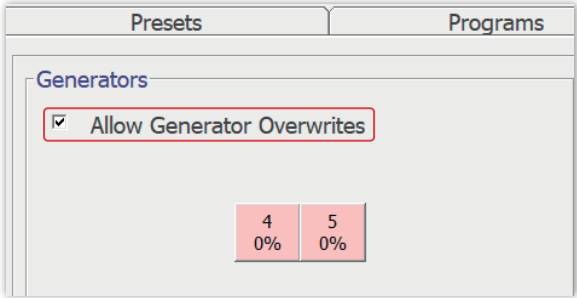
In the File Name field, type:

Cold (C) – SP

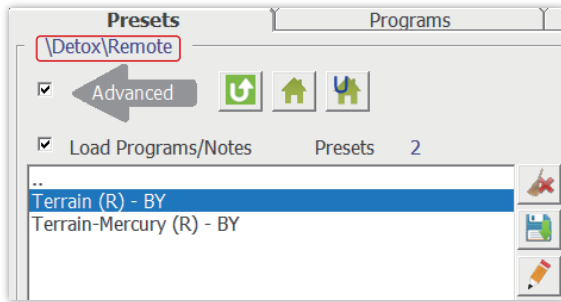
The “C” is to remind you that this is a Contact Mode preset. The SP is the User's initials. Change this to whatever you want, and select Save.



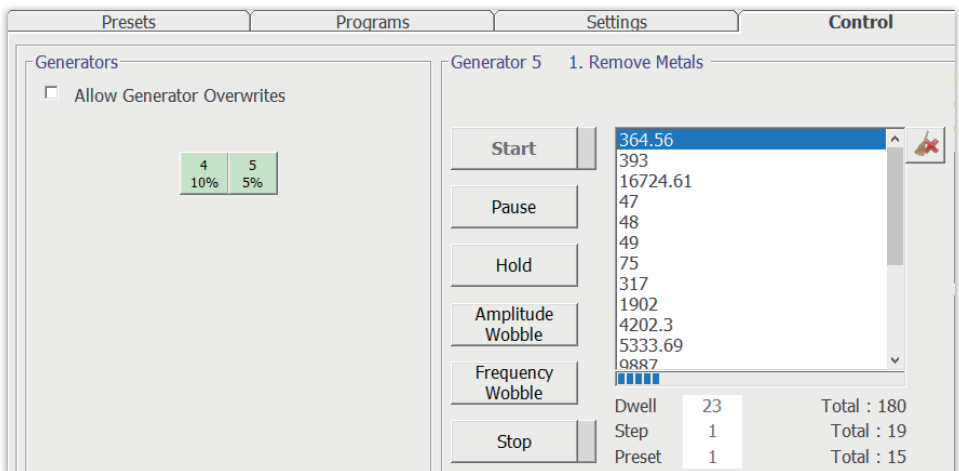
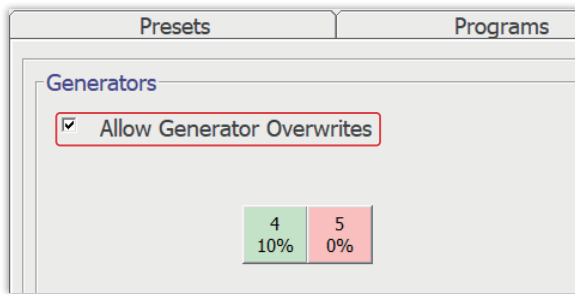
Now you can run the preset. Go to the Control tab. Tick the Allow Generator Overwrites checkbox, then select the generator button Port 4. You can now click Start to start the preset.



For Generator 2 (Port 5), you can choose a detox preset. In the Presets tab, select >Detox, and then the >Remote sub-collection. Next, select Terrain (R) - BY. If you have mercury amalgam fillings, please use Terrain-Mercury (R) - BY.



Go to Control Tab, tick Allow Generator Overwrites, open Generator 2 (Port 5). After the frequencies are loaded, you can click Start button to start the treatment.



Now two generators are running.

Biofeedback Scan

GX changes the rules for biofeedback entirely. A biofeedback scan which takes an hour with Spooky Pulse now takes just over 6 minutes. Even less if you do not need to measure both current and phase angle. No more sitting (or lying) down forever, waiting for a biofeedback scan to complete. GX uses state-of-the-art components and ingenious circuit design to accurately monitor the current and phase angle of signals all the way up to 40 MHz. So you can really see what is happening in your body.

Instructions

Step 1

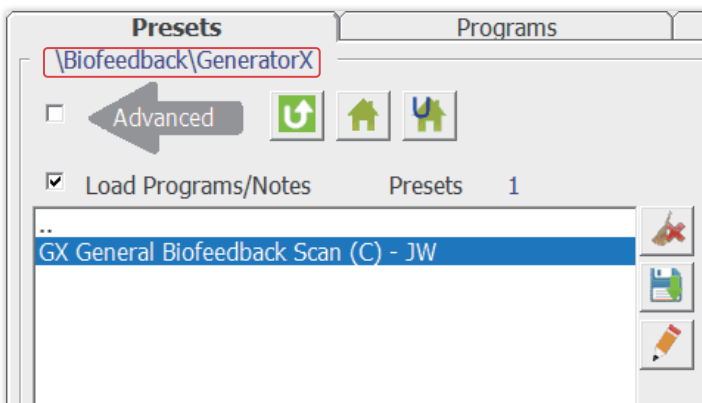
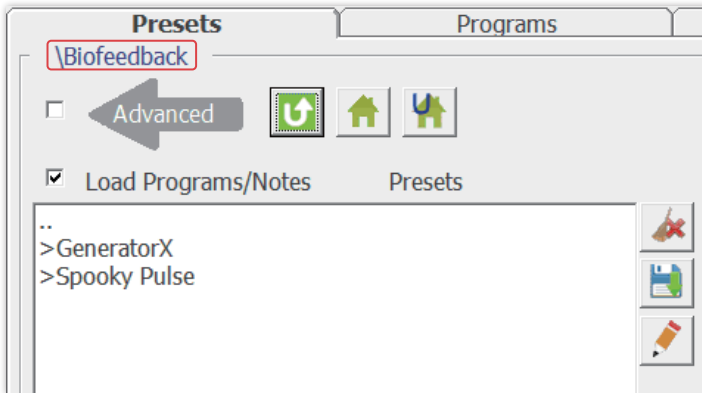
Connect your Spooky Contact mode accessory to G1 or G2. Use either the Low-Power or High-Power Port if you are using Spooky Boost. Then short press the Power button to turn on GX.



Step 2

Launch the Spooky2 software.

Go to the Presets tab, select >Biofeedback, GeneratorX, and then select the GX Biofeedback Scan (C) - JW preset:



Now go to the Control tab, tick Allow Generator Overwrites, then click the red generator control button. The Frequency Column should be empty, and you should see these settings:

Log Name

Start Frequency

20000

Finish Frequency

18000000

Initial Step Size

100

.125

Decimal Places

0

Max Hits to Find

10

Samples/Step

1

Start Delay

100

Threshold

.4

Estimated Biofeedback Duration

00:03:14

Detect

Max

BPM

HRV

Min

Angle

mA

Angle + mA

Change

BPM

0

HRV

0

VI Angle

0

Amps

0

Calculate Using

Running Average

Peak

2 DP Max

Single Scan

Grade Program

Av. BPM

0

Av. HRV

0

Av. Angle

0

Av. Amps

0

Scan

Analyse

Enter the person's name and/or other details in the Log Name field. Place the TENS pads across the area you would like to scan. Then click the Scan button to start the biofeedback scan.

When your scan completes, you will see the results presented in a new window. You can directly do a reverse lookup by clicking Go. This will find matches of the resultant frequencies in the Spooky database. Save the frequency results by clicking the Save button.

Scan Results C:\Spooky2\ScanData\BFB 20180129_1103_22.csv

Hits

1194731.12 (6.35952380952381)

11988887.07 (6.0980952380952)

98222.61 (6.07238095238094)

1437356.46 (5.95714285714286)

95798.98 (5.89380952380952)

1417740.24 (5.84428571428569)

1305538.7 (5.8395238095238)

149452 (5.75380952380948)

221235.98 (5.75190476190474)

1753180.4 (5.75)


Reverse Lookup

0.025

% Tolerance

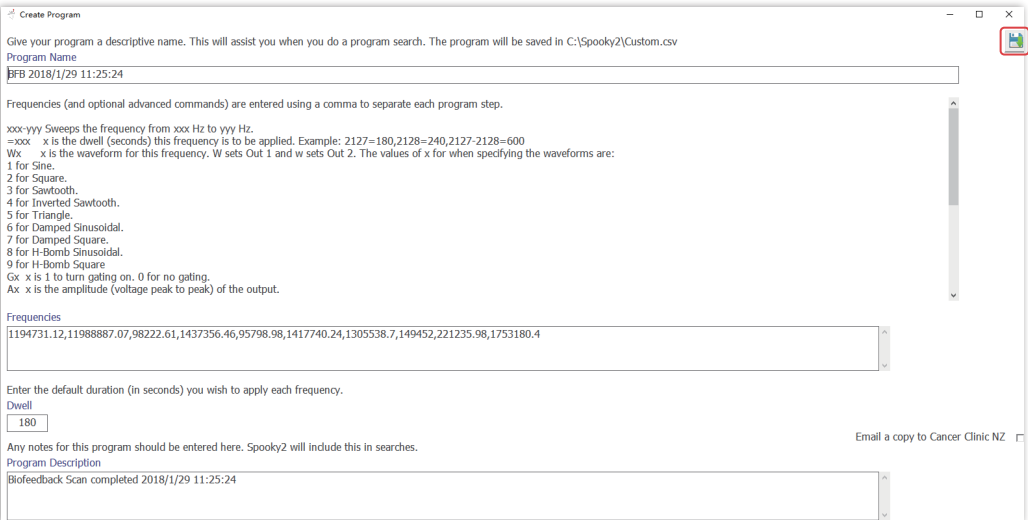
Go

Spooky²



49

This will take you to the Create Program window. Name your scan results set appropriately, then select Save. We suggest including the person's name and date. You can edit the Notes if you wish for future reference.



Give your program a descriptive name. This will assist you when you do a program search. The program will be saved in C:\Spooky2\Custom.csv

Program Name
FBF 2018/1/29 11:25:24

Frequencies (and optional advanced commands) are entered using a comma to separate each program step.

xxx-yyy Sweeps the frequency from xxx Hz to yyy Hz.
=xxx x is the dwell (seconds) this frequency is to be applied. Example: 2127=180,2128=240,2127-2128=600
Wx x is the waveform for this frequency. W sets Out 1 and w sets Out 2. The values of x for when specifying the waveforms are:
1 for Sine.
2 for Square.
3 for Sawtooth.
4 for Inverted Sawtooth.
5 for Triangle.
6 for Damped Sinusoidal.
7 for Damped Square.
8 for H-Bomb Sinusoidal.
9 for H-Bomb Square.
Gx x is 1 to turn gating on. 0 for no gating.
Ax x is the amplitude (voltage peak to peak) of the output.

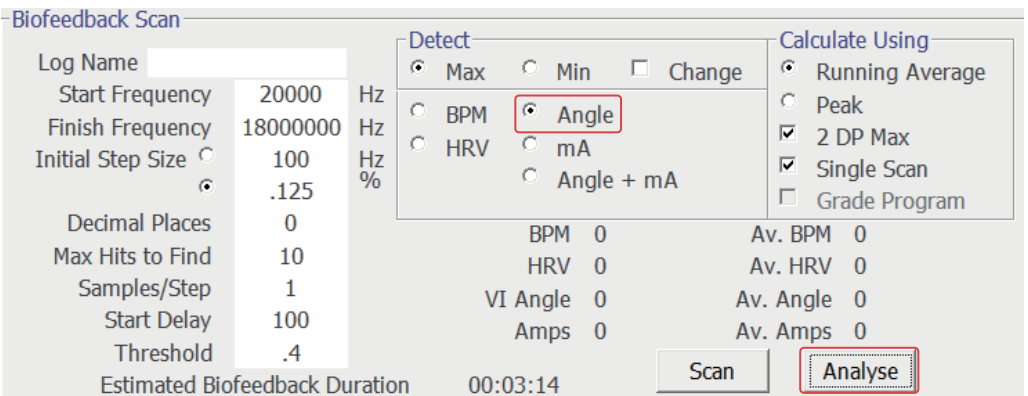
Frequencies
1194731.12,11988887.07,98222.61,1437356.46,95798.98,1417740.24,1305538.7,149452,221235.98,1753180.4

Enter the default duration (in seconds) you wish to apply each frequency.
Dwell
180

Any notes for this program should be entered here. Spooky2 will include this in searches.
Program Description
Biofeedback Scan completed 2018/1/29 11:25:24

Email a copy to Cancer Clinic NZ ☐

Spooky2 will automatically refresh the database after adding a new program. Your new program can now be searched in the Programs tab.



Biofeedback Scan

Log Name

Start Frequency	20000	Hz
Finish Frequency	18000000	Hz
Initial Step Size	<input type="radio"/> 100	Hz
	<input checked="" type="radio"/> .125	%
Decimal Places	0	
Max Hits to Find	10	
Samples/Step	1	
Start Delay	100	
Threshold	.4	
Estimated Biofeedback Duration	00:03:14	

Detect

☒ Max ☐ Min ☐ Change

☐ BPM ☒ Angle

☐ HRV ☐ mA ☐ Angle + mA

BPM 0 Av. BPM 0
HRV 0 Av. HRV 0
VI Angle 0 Av. Angle 0
Amps 0 Av. Amps 0

Calculate Using

☒ Running Average

☐ Peak

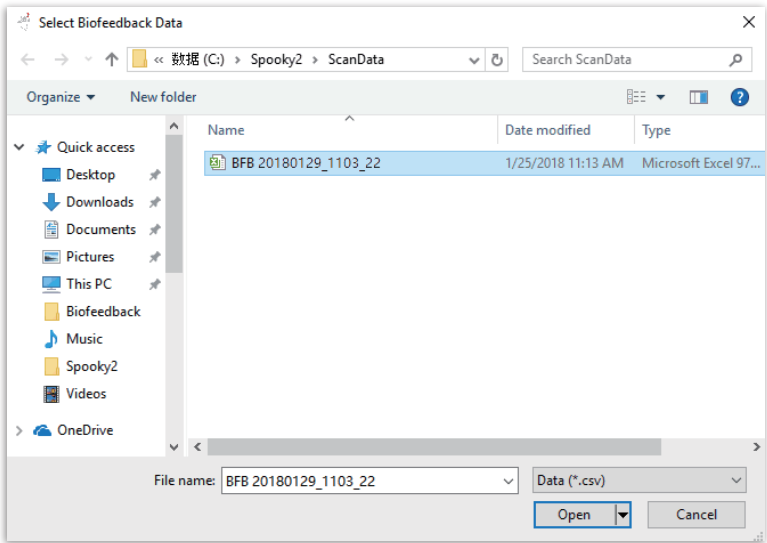
☒ 2 DP Max

☒ Single Scan

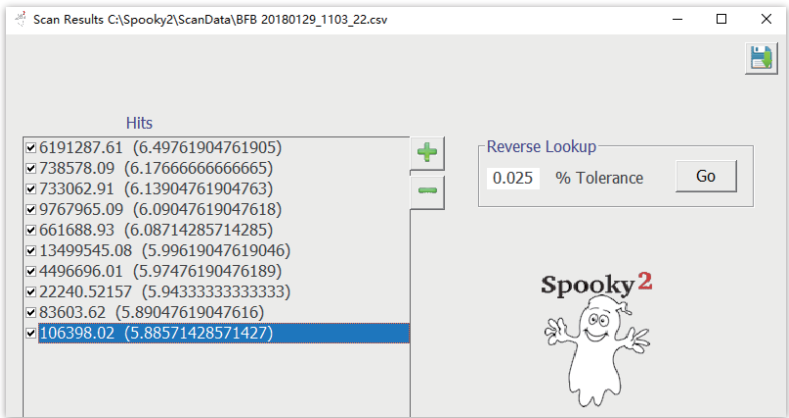
☐ Grade Program

Scan Analyse

You can also click Analyse to open data from a previous scan. In this way you can also choose different settings for the analysis, such as choosing Angle instead of Current. BPM and HRV are for the Spooky2-XM Generator.



When the file opens, Spooky will instantly perform another analysis and present the results ready for another Reverse Lookup or for saving. The numbers in the file names are the scan date and time.

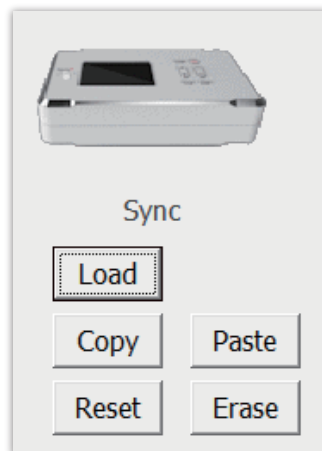


Tips

1. It is better to have the electrodes as close as possible across the problem area, so more of the pathogen cells are passed by the signal.
2. For the whole body scan, you can place one Tens pad on the back of the right hand, and place the other just below the outside ankle of your left foot. This is not recommended as more healthy cells will lessen the pathogen cell signal.
3. Hand cylinders can be used instead of TENS pads, but the grip has to be kept constant for accurate results.
4. The biofeedback scan function can only be used when GX is controlled by the Spooky2 software. It cannot be performed stand-alone.
5. Spooky2 can only perform one biofeedback at a time.
6. Never place electrodes above the neck and keep them away from the heart.

GX Software Features

When GX is detected, the Spooky software shows more controls. Here we will explain the function of these controls.

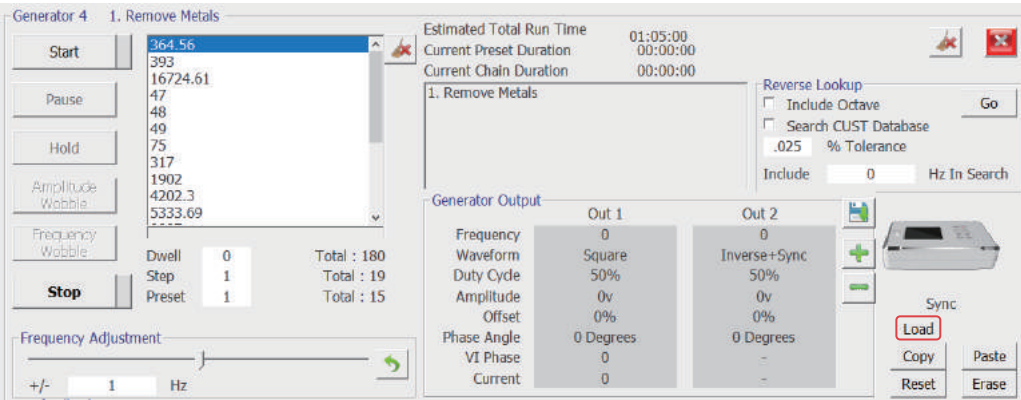


Load

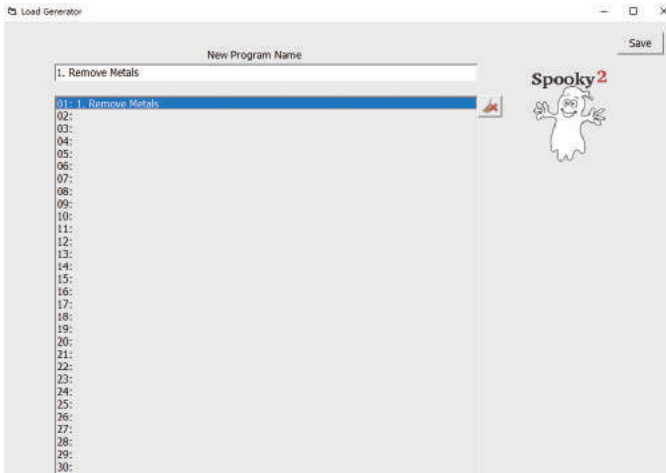
Store programs and basic settings in the generator so it can run stand-alone.

Loading programs into GX

- 1. Choose a Preset in the Presets tab.
- 2. Go to the Control tab. Tick Allow Generator Overwrites and open a generator.
- 3. Click the Load button.



- 4. Double click to select a memory location to save the preset and click Save. You can overwrite an existing memory location if you wish. Load up to 30 programs into each generator.

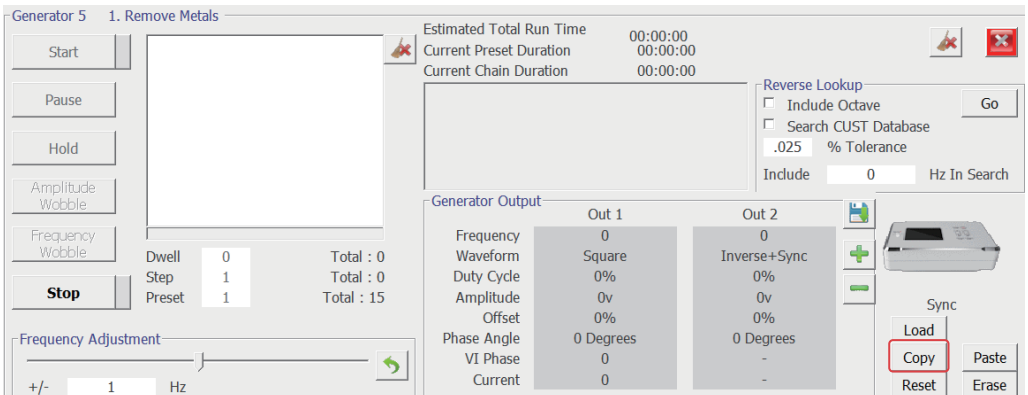


5. Turn off GX and disconnect from your computer. You now have a stand-alone Rife machine!

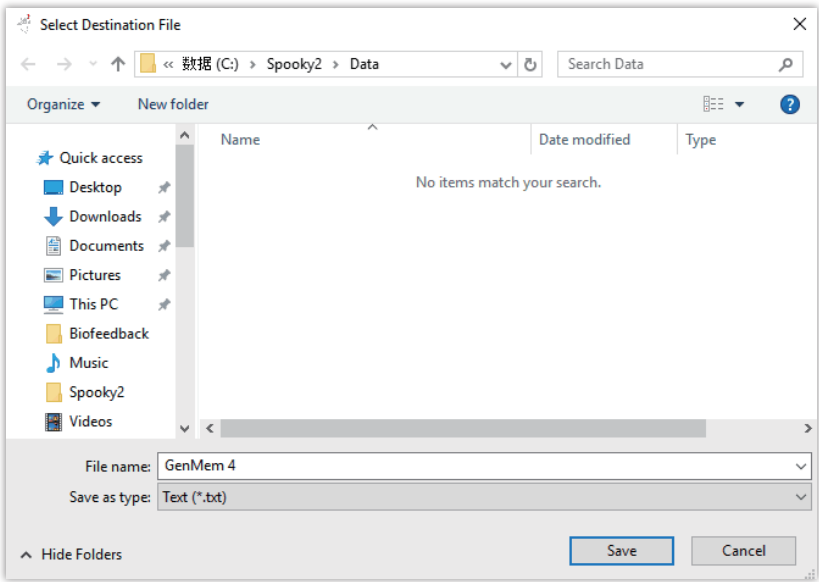
Copy

Copy GX memory to a memory file. The entire memory will be saved.

1. Go to the Control tab, select a generator, and click Copy.



2. Name the copied file and save it. The file will be saved in \Spooky2\Data.



Paste

Paste a memory file to GX. The entire memory contents will be transferred to GX memory.

Please note that Copy and Paste functions are very convenient if you want to standardize the stand-alone programs in your generators, or if you want to share program sets or generators with your friends.

Reset

Reset the generator to factory defaults. The generator will power off after resetting. You will need to Rescan Devices (top menu Utils) after resetting.

Erase

Clear all programs in the generator.

Part 2 Stand-alone - Running Spooky2 Programs

Hardware Connection

Connect the 12V power adaptor into GX.
Connect the transmission device of your choice to the output of GX.
Because each GX contains 2 function generators, you can use two transmission devices on your GX simultaneously.

This example shows 2 Spooky Remotes connected to GX:



Press the Power button to turn on GX.
You can choose programs for either G1 or G2. In this example we have selected the first generator G1.



Press the G1 button. The selected generator panel will turn white. Pressing the Stop button will return to the main screen.



Use the arrow Up and Down buttons to choose the program to run, for example, Abdominal Pain.



Highlight a program, and press the Start button. This selects the program. GX will return to the main screen.



Press Start button again. The program will start. The frequency will be shown in the display.



If you wish to run the program continuously, press the Loop button instead of the Start button. The Loop icon will appear on the top right of the screen.



If you press Start or Loop while a program is running, it will pause.



Pressing the same button again will continue the program. Pressing Stop will stop the running program.



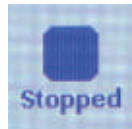


Press the G2 button to choose a program for G2. The procedure for choosing and running a program for G2 is the same as that of G1.

Generator Status



Running



Stopped



Paused



Looping



USB is connected



GX detected by Spooky

Specifications

General Description

GeneratorX is a state-of-the-art arbitrary waveform generator, with two generators combined into a single unit. Display and memory storage tasks are controlled by an immensely powerful 266 MHz ARM (Advanced RISC Machine) processor. A second 266 MHz ARM processor handles the main functions. A third 16 MHz advanced STM8 core processor controls the analog measuring capabilities of GeneratorX. The 3 processors work together for unparalleled performance.

GeneratorX Specifications

Input Voltage: 12VDC 2A
 Configuration: 2 x Independent DDS generators
 Output Short Circuit Protection: Yes
 Offline (Stand-alone) Operation: Yes
 USB speed: 115200 bps
 Maximum Offline Program Count: 30
 Maximum frequencies per program: 200
 Microprocessors: 2 x 266 MHz ARM. 1 x 16 MHz advanced STM8 core CPU
 Output waveform: 10 bits x 1024 bits
 Sampling Rate: 266 MSPS
 Display: 3.2" TFT True Color LCD
 Display Resolution: 320 x 240 bit
 Maximum Amplitude: 20vpp
 Amplitude Resolution: 0.01v
 Output Impedance: 50 Ω
 Frequency Range: 0 – 40 MHz for all waveforms
 Frequency Resolution: 0.00001 Hz up to 40 kHz. 0.01 Hz above 40 kHz
 Modulation Method: AM (Out 2 modulates Out 1)
 Measurement Detection: Current and Phase Angle
 Measurement Method: High-side Detection
 Measurement Frequency Range: 100 Hz – 40 MHz
 Measurement Resolution: 16 bits
 Current detection resolution: 3.4uA
 Phase angle detection resolution: 0.0015 degrees

Tips

Treatment Choices

Before you use Spooky2 to tackle any problem, you have a number of very important things to consider first:

Which mode – plasma, contact, or remote?

Plasma: well-designed and implemented plasma is quickest and most powerful. The very best available today comes from the Spooky Team – Spooky Central.

Contact: this comes next for speed and power.

Remote: scalar DNA treatment. The convenience of Remote Mode makes it a winner.

There are considerable benefits to be had from mixing your modes, and our recommendation is to do one Plasma or Contact session on the main problem every day, then switch the generator over to Remote Mode. That way, you get the best of both worlds.

Protocols

Spooky2 software includes Terrain Protocol, Cancer Protocol, Morgellons and Lyme Protocol, Intensive Care Protocol, etc. You can find them in the Presets tab.

Legal Notice & Disclaimer

The Spooky and / or Spooky2 software and frequency generation systems are not approved by the FDA as medical devices. They are intended for use as experimental electronic devices only. They are not intended for the diagnosis, prevention, cure, treatment, or mitigation of any disease or illness in human beings. Neither are they designed or intended to affect the function or structure of any human body system.

We make no medical claims whatsoever for the Spooky and / or Spooky2 frequency generation systems. If you have a problem with your health, please consult a licensed healthcare professional.

In the US, you can legally use frequency systems like Spooky and / or Spooky2 for testing, energy balancing, life extension, and relaxation. You can experiment using frequencies on bacterial cultures, laboratory animals, and yourself. You still have a legal right to self-medicate under the Ninth Amendment of the United States Constitution.

In Germany and South Africa, as well as some other nations, frequency devices are legally licensed as medical instruments.

Please note that we are not responsible whatsoever for the use, abuse, or misuse, intentionally or unintentionally, of the Spooky and/or Spooky2 frequency generation systems or any of their component parts due to any circumstances beyond our reasonable control. In any case, I, John White, or any of my associates, shall have no other liability.

By using the Spooky and / or Spooky2 frequency generation systems, you, the user, understand and accept that you have no expectation of curing any ailment.

You also understand that possible negative physical and/or mental effects, unknown to us, might result from the use of the Spooky and / or Spooky2 frequency generation systems. Moreover, you intend to undertake only responsible experimentation, and you voluntarily accept all responsibility for the use and application of all frequencies generated by the Spooky and / or Spooky2 systems.

Furthermore, you agree that you will not hold us responsible for any consequences, whether harmful or otherwise, that may occur as a result of using the Spooky and / or Spooky2 frequency generation systems.

Spooky2 Software License

Although the source code is © John White, this software is free, and has been written for the greater benefit and knowledge of all mankind. You are actively encouraged to pass it on freely to everyone you know, as long as it's accompanied by this document.

SPOOKY 2